

FOR ILLUSTRATION ONLY

# 1-BEDROOM + STUDY

**TYPE AS1**

**47sqm / 506 sqft**

BLK 11 #02-60 to #07-60

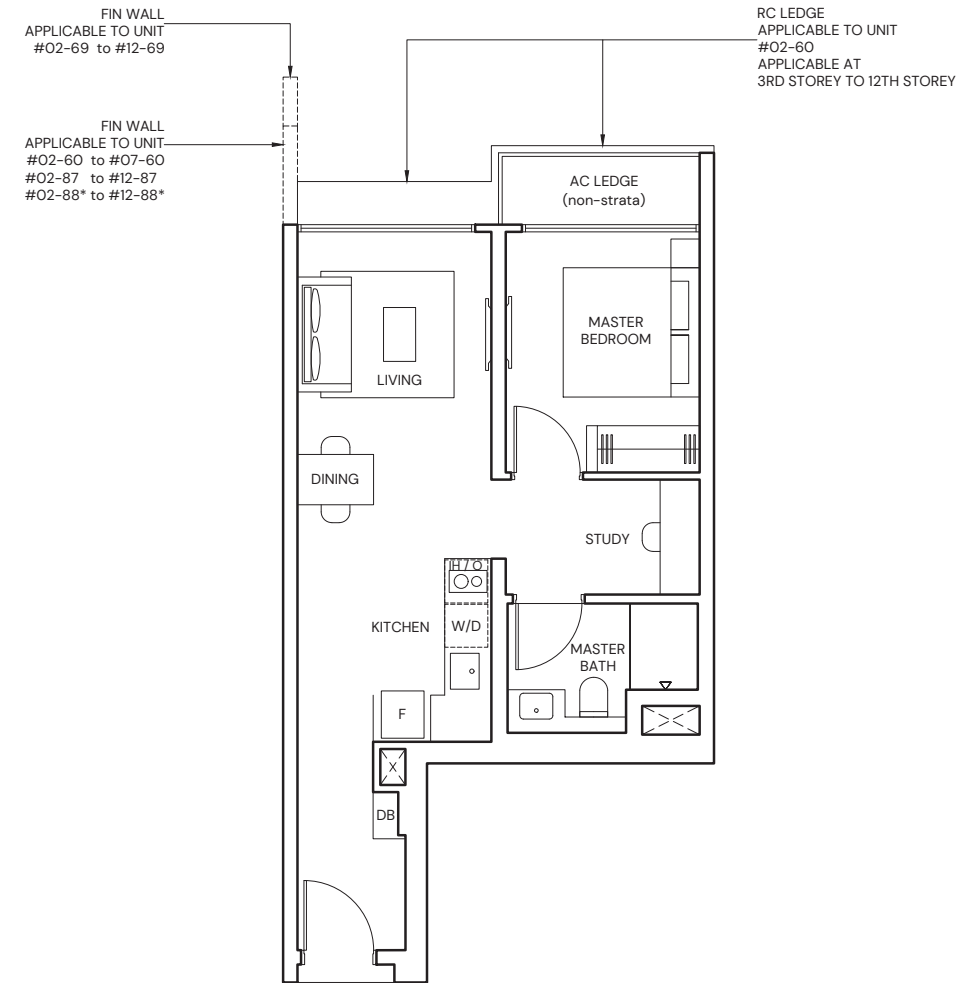
BLK 13 #02-69 to #12-69

BLK 17 #02-87 to #12-87

BLK 19 #02-88\* to #12-88\*

BLK 21 #02-105 to #12-105

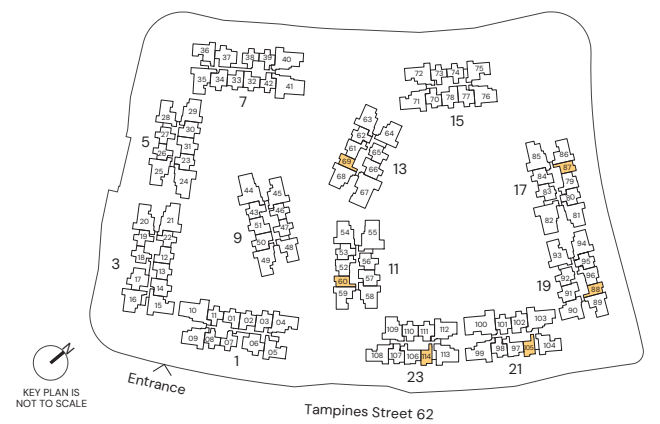
BLK 23 #02-114 to #12-114



**\* Mirrored Unit**



Area includes Private Enclosed Space (PES) or Balcony, where applicable. All AC ledges and RC ledges (non-load bearing) are excluded from strata area. The plans are subjected to change as may be required by relevant authorities. All areas and measurements stated herein as approximate and subject to final survey.

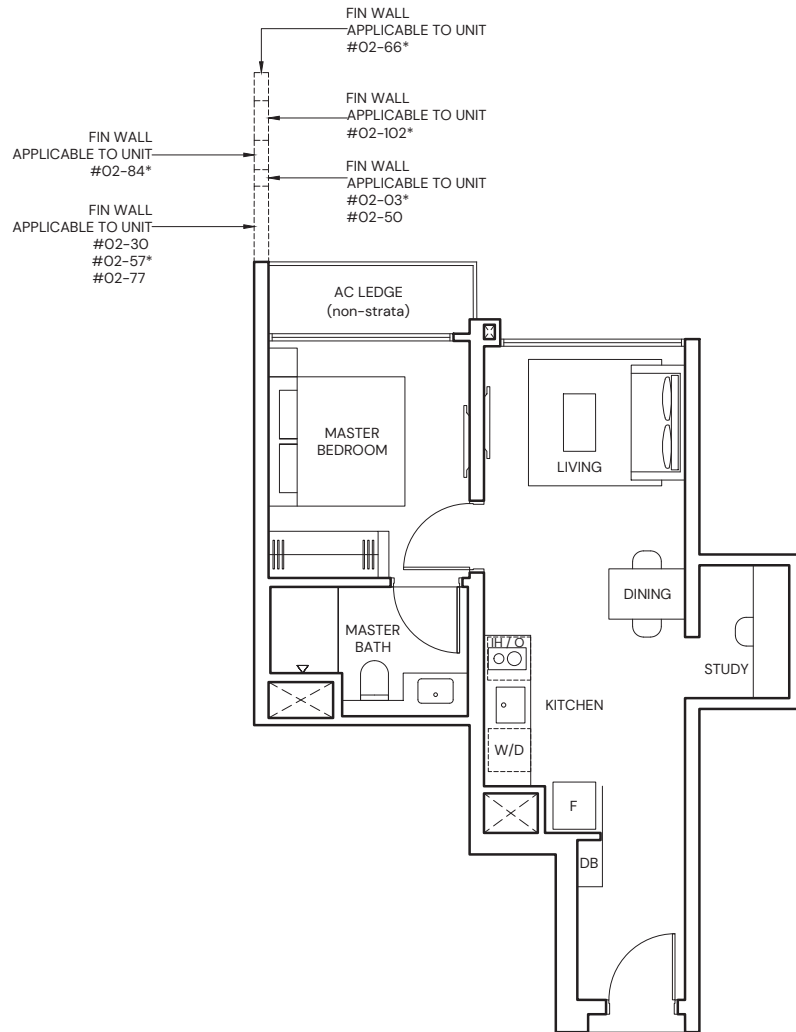


# 1-BEDROOM + STUDY

## TYPE AS2

43 sqm / 463 sqft

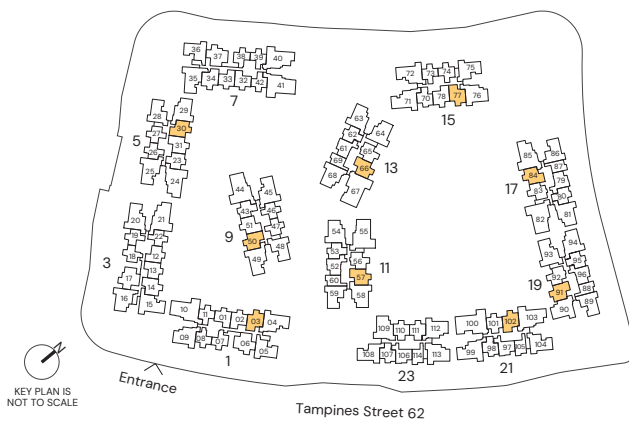
- |               |                |                 |
|---------------|----------------|-----------------|
| BLK 1 #02-03* | BLK 11 #02-57* | BLK 17 #02-84*  |
| BLK 5 #02-30  | BLK 13 #02-66* | BLK 19 #02-91   |
| BLK 9 #02-50  | BLK 15 #02-77  | BLK 21 #02-102* |



\* Mirrored Unit



Area includes Private Enclosed Space (PES) or Balcony, where applicable. All AC ledges and RC ledges (non-load bearing) are excluded from strata area. The plans are subjected to change as may be required by relevant authorities. All areas and measurements stated herein as approximate and subject to final survey.

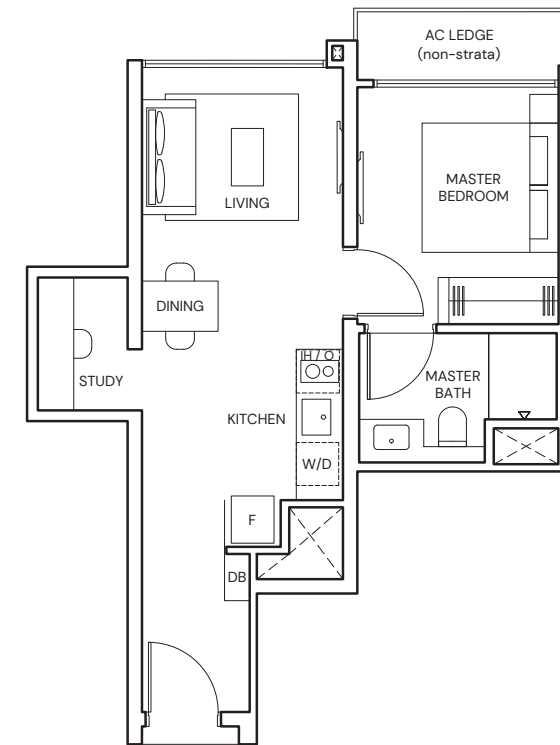


# 1-BEDROOM + STUDY

## TYPE AS3

43 sqm / 463 sqft

- BLK 3 #02-14  
BLK 7 #02-34



Area includes Private Enclosed Space (PES) or Balcony, where applicable. All AC ledges and RC ledges (non-load bearing) are excluded from strata area. The plans are subjected to change as may be required by relevant authorities. All areas and measurements stated herein as approximate and subject to final survey.



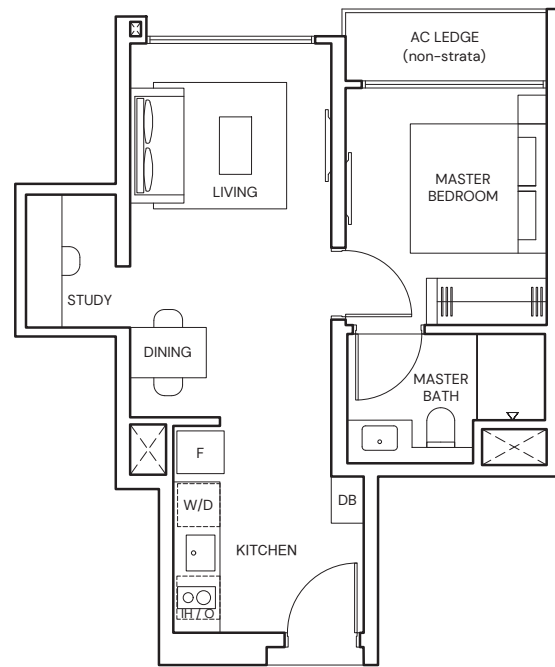


# 1-BEDROOM + STUDY

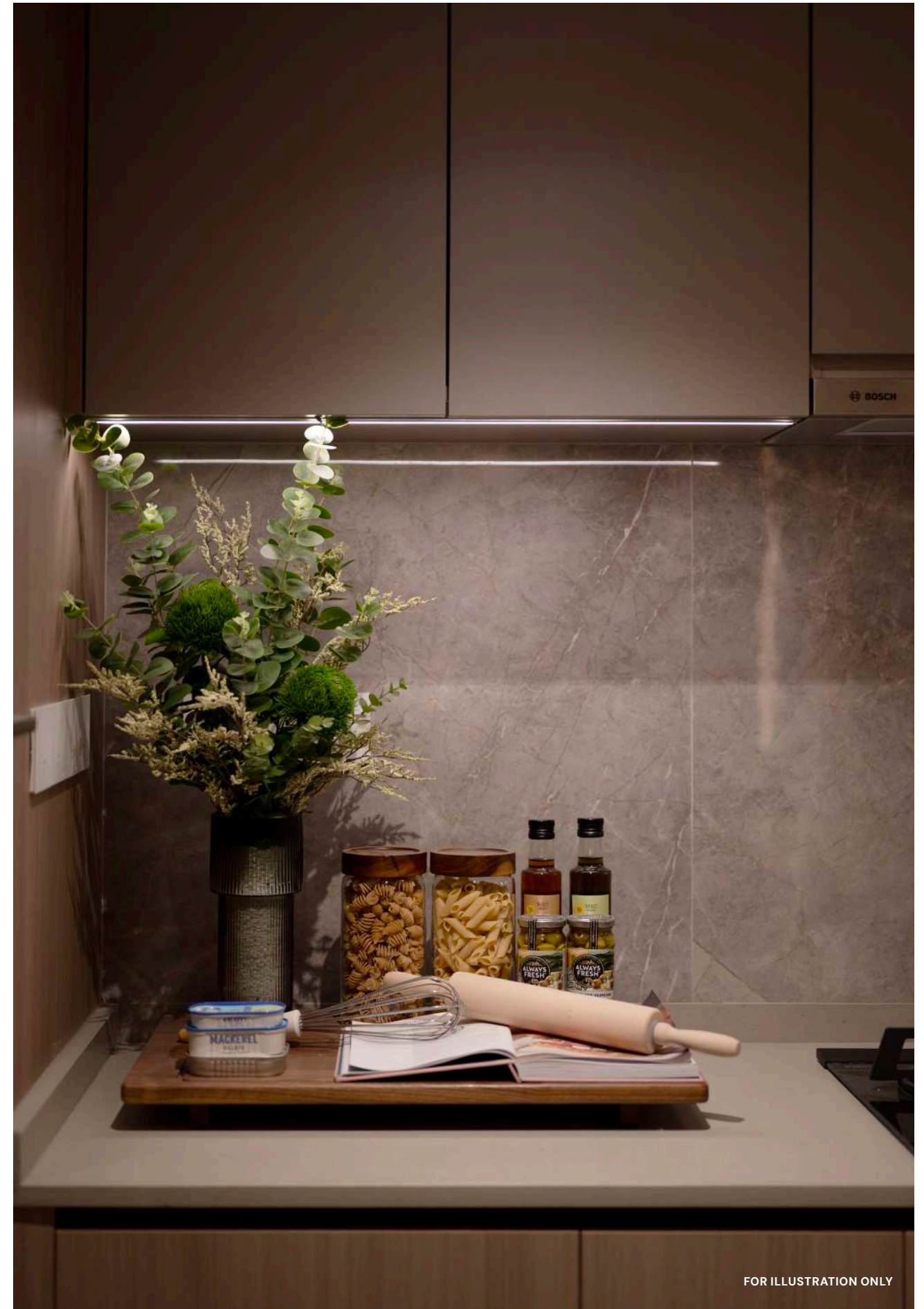
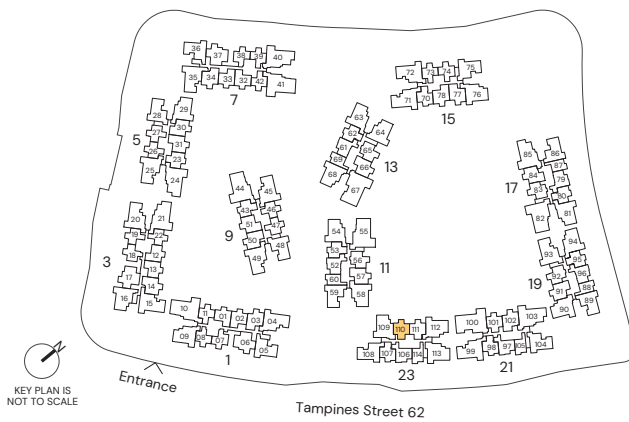
TYPE AS4

43 sqm / 463 sqft

BLK 23 #02-110



Area includes Private Enclosed Space (PES) or Balcony, where applicable. All AC ledges and RC ledges (non-load bearing) are excluded from strata area. The plans are subjected to change as may be required by relevant authorities. All areas and measurements stated herein as approximate and subject to final survey.



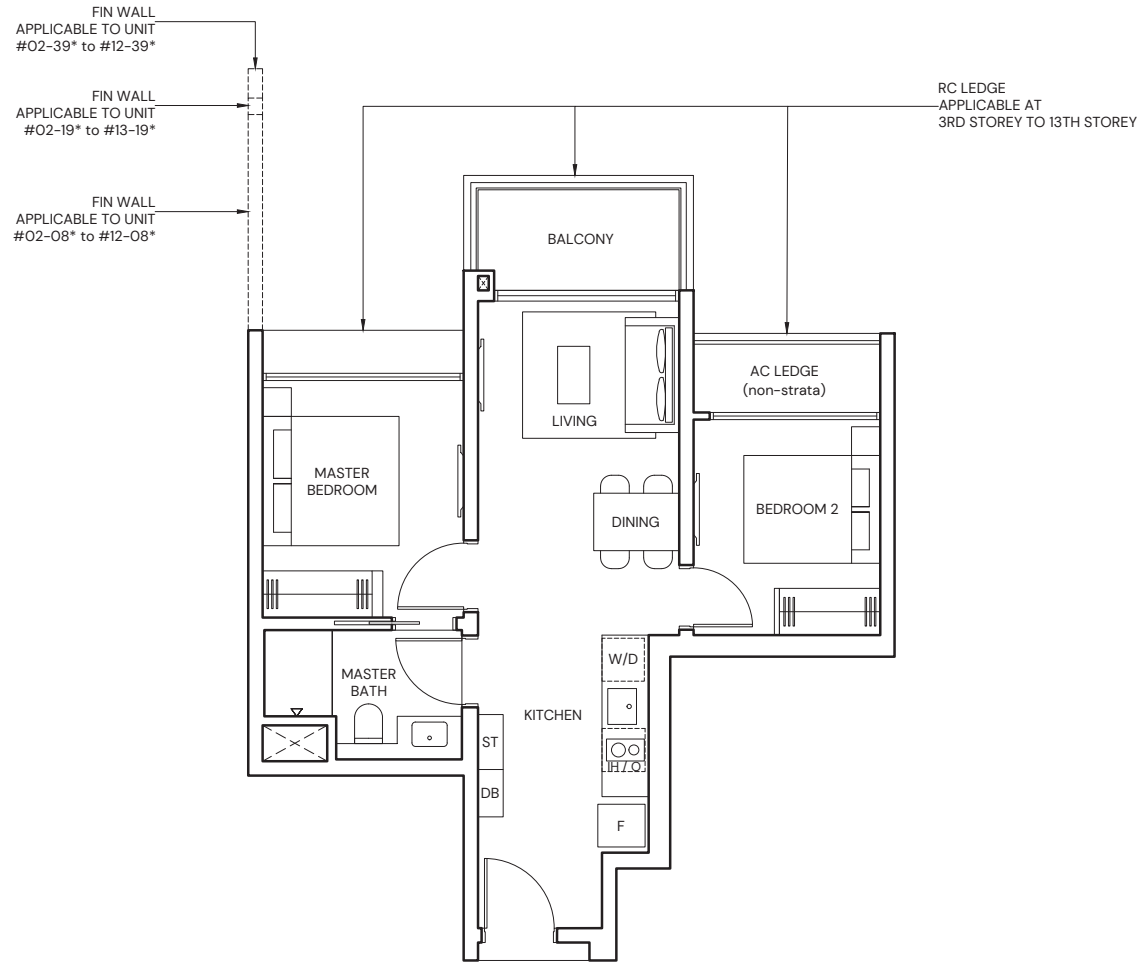
FOR ILLUSTRATION ONLY

# 2-BEDROOM

## TYPE B1

55 sqm / 592 sqft

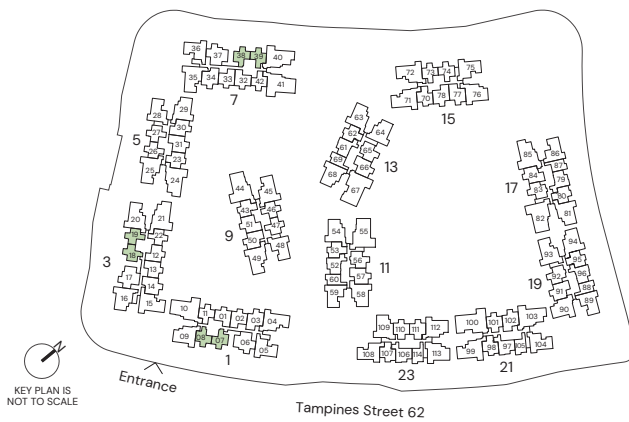
BLK 1 #02-07 to #12-07  
 BLK 1 #02-08\* to #12-08\*  
 BLK 3 #02-18 to #13-18  
 BLK 3 #02-19\* to #13-19\*  
 BLK 7 #02-38 to #12-38  
 BLK 7 #02-39\* to #12-39\*



\* Mirrored Unit



Area includes Private Enclosed Space (PES) or Balcony, where applicable. All AC ledges and RC ledges (non-load bearing) are excluded from strata area. The plans are subjected to change as may be required by relevant authorities. All areas and measurements stated herein as approximate and subject to final survey.



# 2-BEDROOM

## TYPE B2

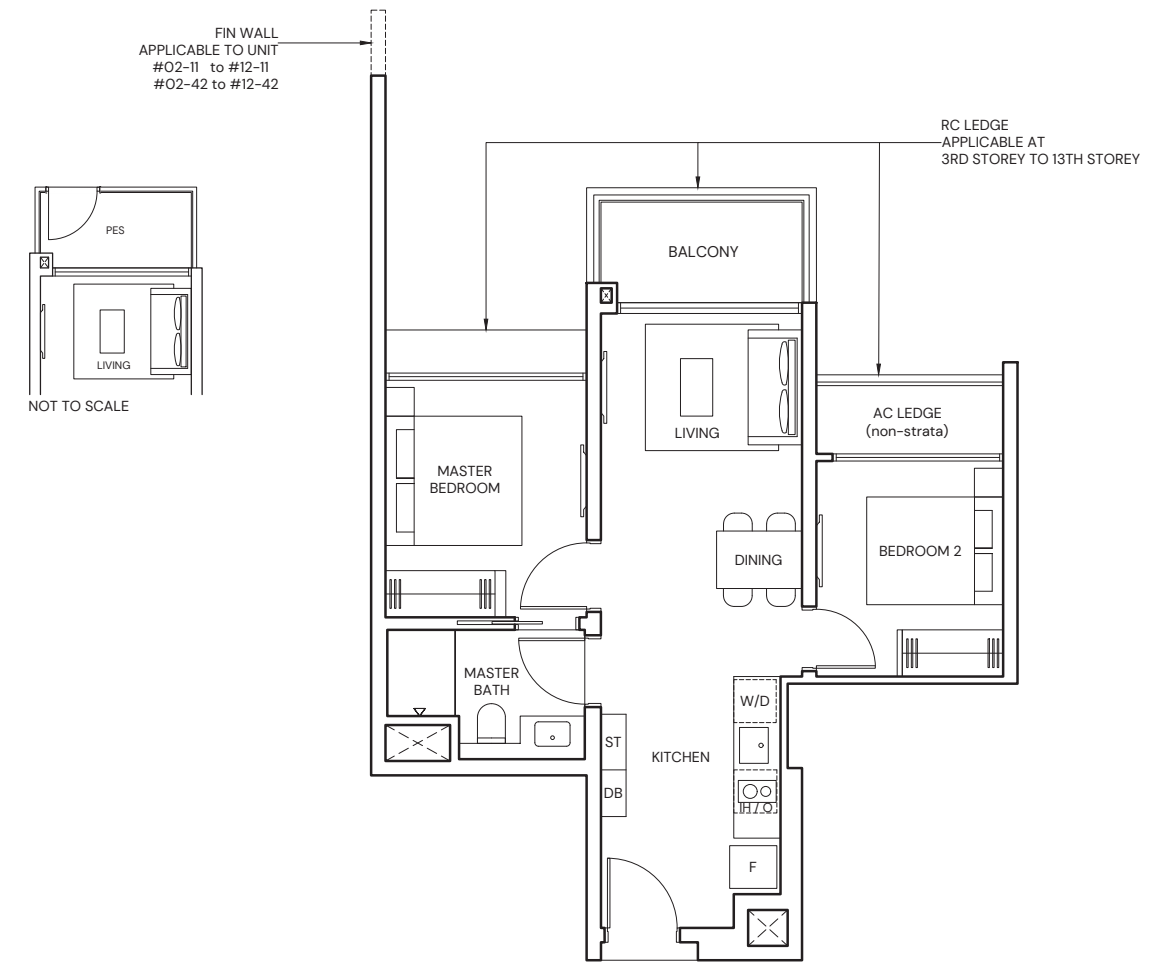
55 sqm / 592 sqft

BLK 1 #03-11 to #12-11  
 BLK 3 #03-22 to #13-22  
 BLK 7 #03-42 to #12-42

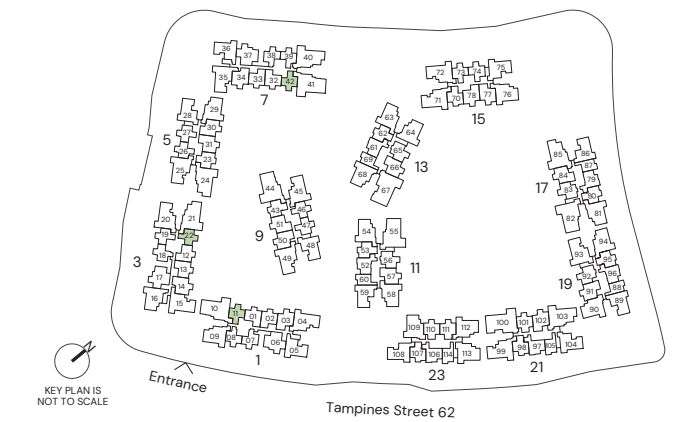
## TYPE B2(p)

55 sqm / 592 sqft

BLK 1 #02-11  
 BLK 3 #02-22  
 BLK 7 #02-42



Area includes Private Enclosed Space (PES) or Balcony, where applicable. All AC ledges and RC ledges (non-load bearing) are excluded from strata area. The plans are subjected to change as may be required by relevant authorities. All areas and measurements stated herein as approximate and subject to final survey.

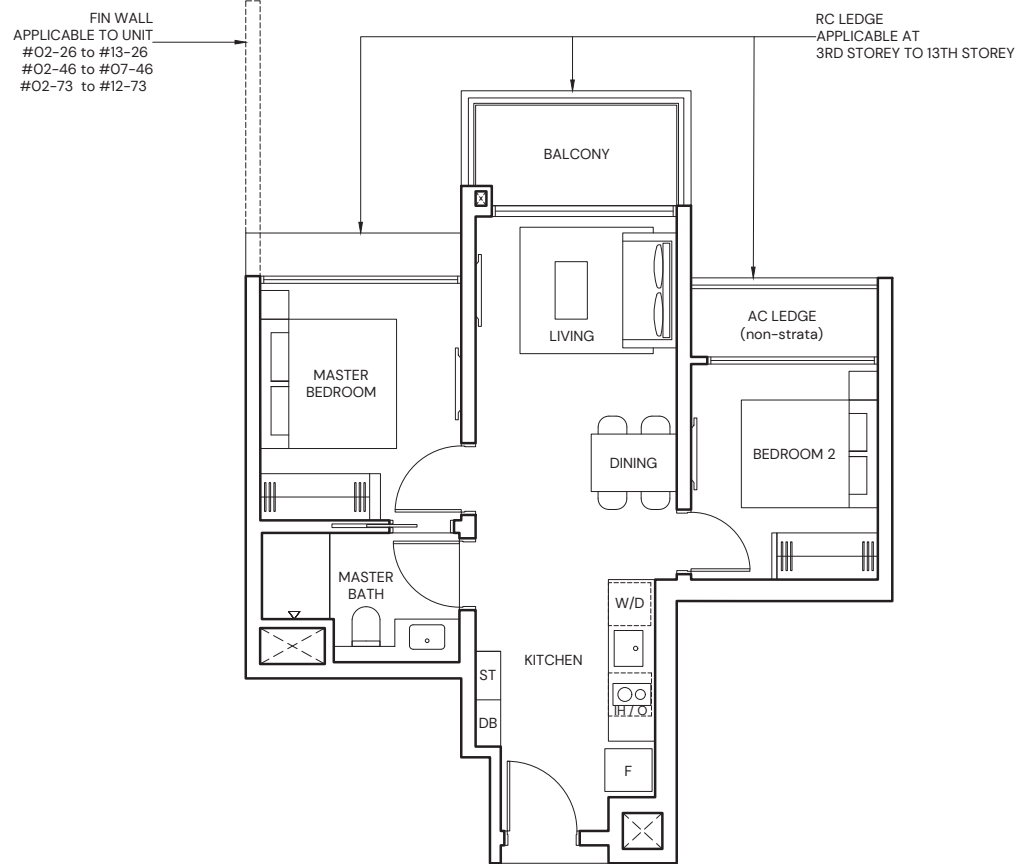


# 2-BEDROOM

## TYPE B3

55 sqm / 592 sqft

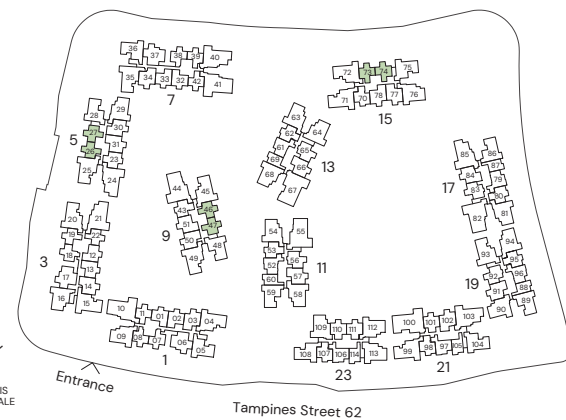
- |                          |                           |
|--------------------------|---------------------------|
| BLK 5 #02-26 to #13-26   | BLK 9 #02-47* to #07-47*  |
| BLK 5 #02-27* to #13-27* | BLK 15 #02-73 to #12-73   |
| BLK 9 #02-46 to #07-46   | BLK 15 #02-74* to #12-74* |



\* Mirrored Unit



Area includes Private Enclosed Space (PES) or Balcony, where applicable. All AC ledges and RC ledges (non-load bearing) are excluded from strata area. The plans are subjected to change as may be required by relevant authorities. All areas and measurements stated herein as approximate and subject to final survey.



# 2-BEDROOM PREMIUM

## TYPE BP1

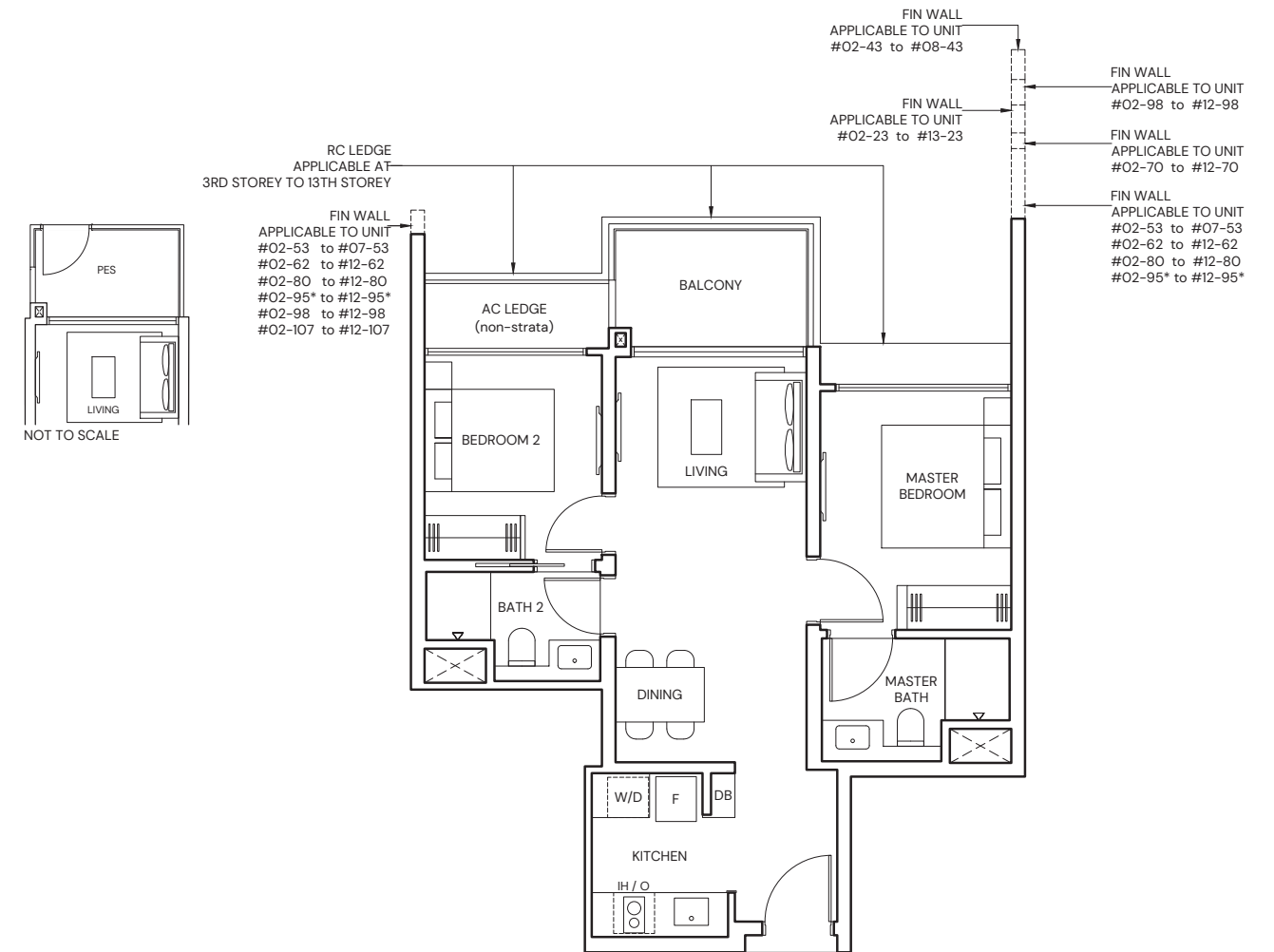
63 sqm / 678 sqft

- |                         |                         |                           |
|-------------------------|-------------------------|---------------------------|
| BLK 5 #03-23 to #13-23  | BLK 13 #02-62 to #12-62 | BLK 19 #02-95* to #12-95* |
| BLK 9 #03-43 to #08-43  | BLK 15 #03-70 to #12-70 | BLK 21 #02-98 to #12-98   |
| BLK 11 #02-53 to #07-53 | BLK 17 #02-80 to #12-80 | BLK 23 #02-107 to #12-107 |

## TYPE BP1(p)

63 sqm / 678 sqft

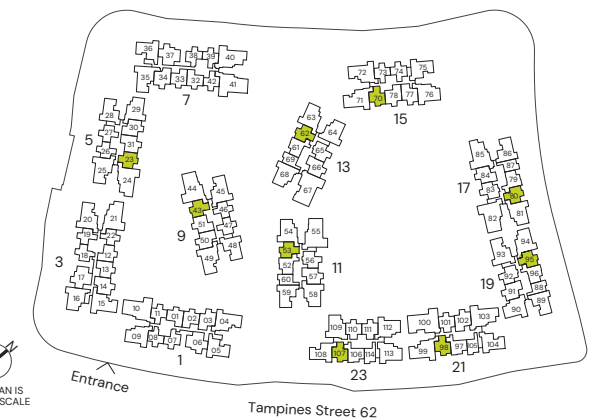
- |               |
|---------------|
| BLK 5 #02-23  |
| BLK 9 #02-43  |
| BLK 15 #02-70 |



\* Mirrored Unit



Area includes Private Enclosed Space (PES) or Balcony, where applicable. All AC ledges and RC ledges (non-load bearing) are excluded from strata area. The plans are subjected to change as may be required by relevant authorities. All areas and measurements stated herein as approximate and subject to final survey.



## 2-BEDROOM PREMIUM

### TYPE BP2

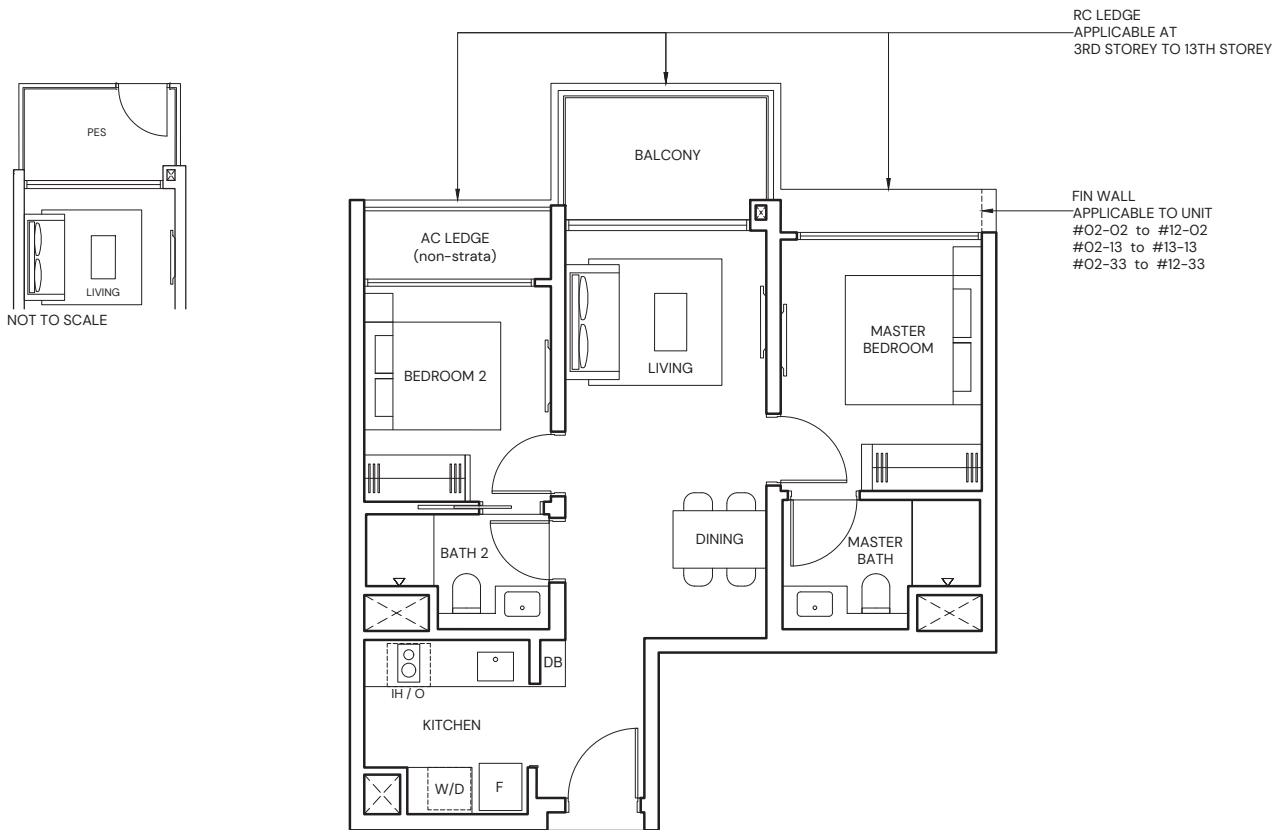
63 sqm / 678 sqft

BLK 1 #03-01\* to #12-01\*  
BLK 1 #03-02 to #12-02  
BLK 3 #03-12\* to #13-12\*

### TYPE BP2(p)

63 sqm / 678 sqft

BLK 1 #02-01\* BLK 3 #02-13  
BLK 1 #02-02 BLK 7 #02-32\*  
BLK 3 #02-12\* BLK 7 #02-33



NOT TO SCALE

#### \* Mirrored Unit

0 1 2 3 4 5M

Area includes Private Enclosed Space (PES) or Balcony, where applicable. All AC ledges and RC ledges (non-load bearing) are excluded from strata area. The plans are subjected to change as may be required by relevant authorities. All areas and measurements stated herein as approximate and subject to final survey.



## 2-BEDROOM PREMIUM

### TYPE BP3

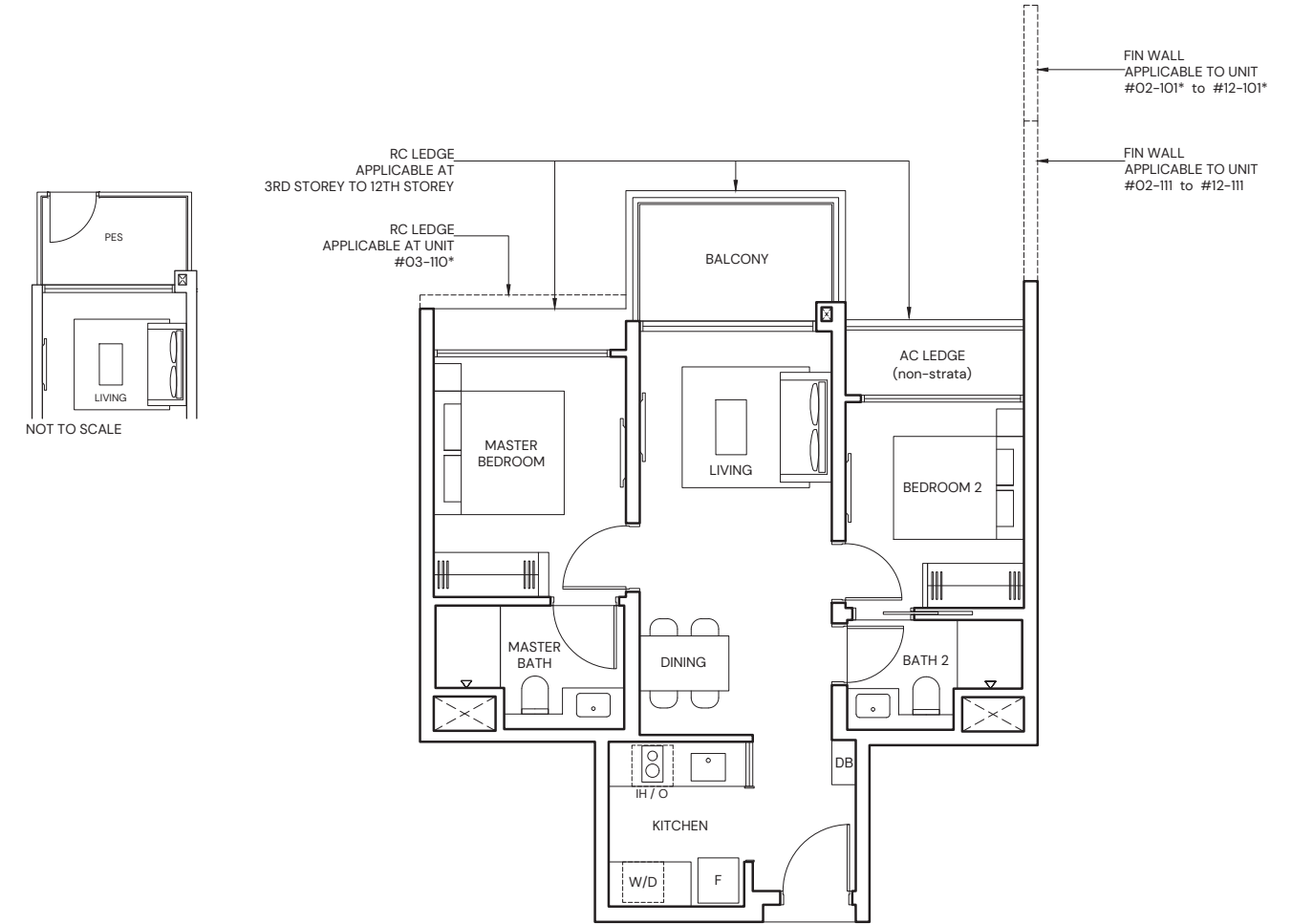
63 sqm / 678 sqft

BLK 21 #03-101\* to #12-101\*  
BLK 23 #03-110\* to #12-110\*  
BLK 23 #03-111 to #12-111

### TYPE BP3(p)

63 sqm / 678 sqft

BLK 21 #02-101\*  
BLK 23 #02-111

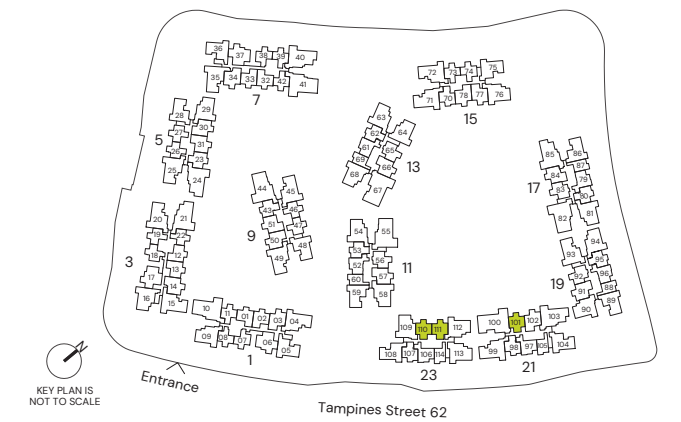


NOT TO SCALE

#### \* Mirrored Unit

0 1 2 3 4 5M

Area includes Private Enclosed Space (PES) or Balcony, where applicable. All AC ledges and RC ledges (non-load bearing) are excluded from strata area. The plans are subjected to change as may be required by relevant authorities. All areas and measurements stated herein as approximate and subject to final survey.



## 2-BEDROOM PREMIUM

### TYPE BP4

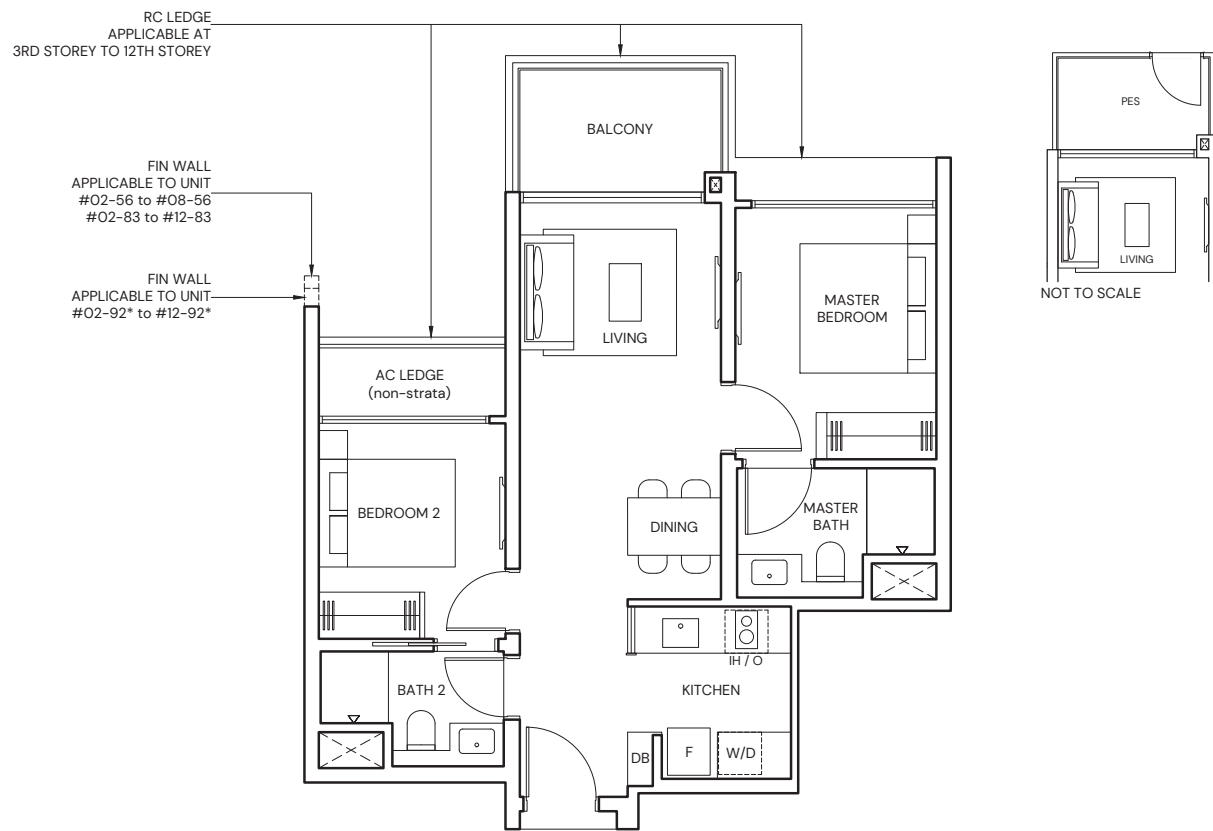
63 sqm / 678 sqft

BLK 11 #03-56 to #08-56  
BLK 13 #03-65 to #12-65  
BLK 17 #03-83 to #12-83  
BLK 19 #03-92\* to #12-92\*

### TYPE BP4(p)

63 sqm / 678 sqft

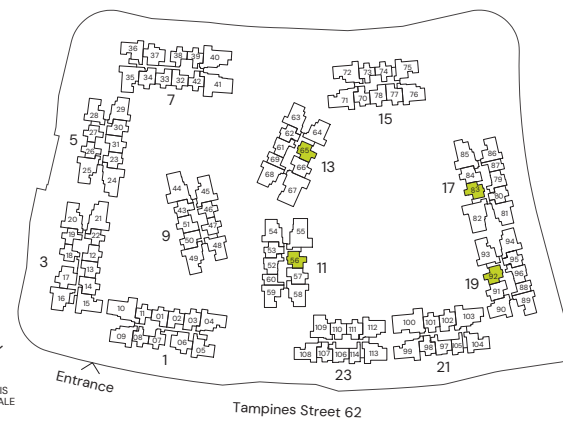
BLK 11 #02-56  
BLK 13 #02-65  
BLK 17 #02-83  
BLK 19 #02-92\*



#### \* Mirrored Unit

0 1 2 3 4 5M

Area includes Private Enclosed Space (PES) or Balcony, where applicable. All AC ledges and RC ledges (non-load bearing) are excluded from strata area. The plans are subjected to change as may be required by relevant authorities. All areas and measurements stated herein as approximate and subject to final survey.

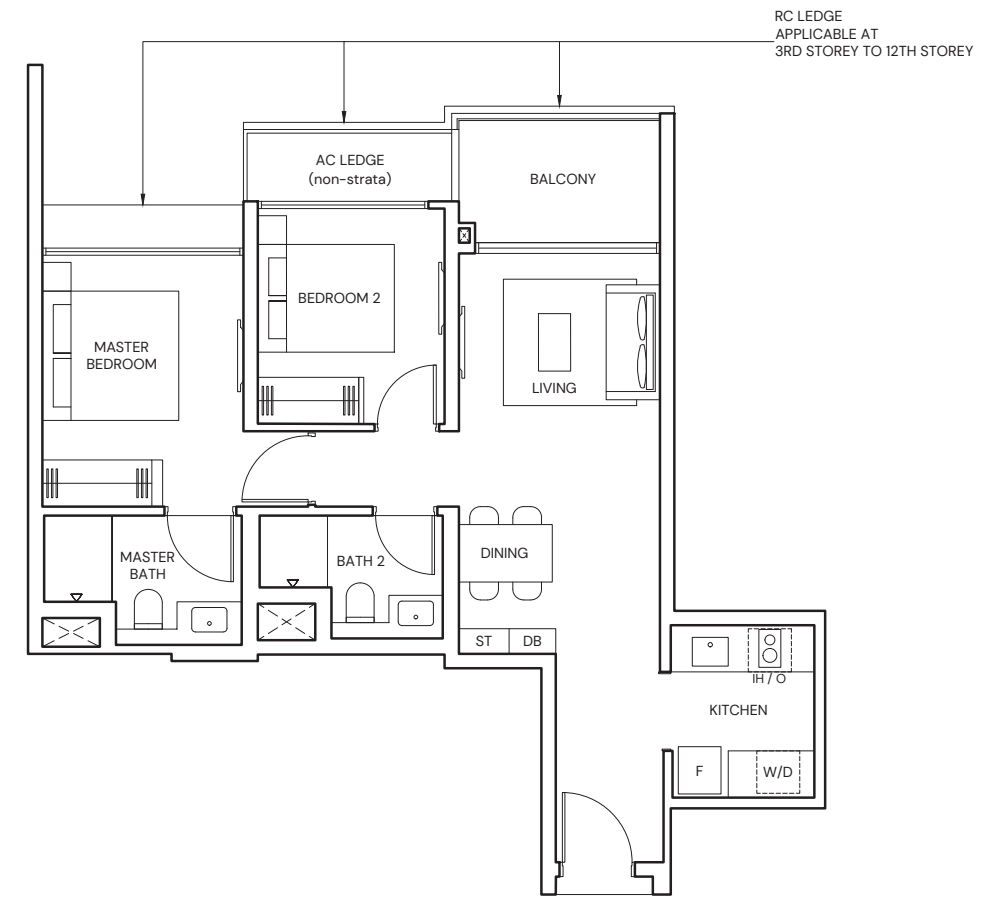


## 2-BEDROOM PREMIUM

### TYPE BP5

67 sqm / 721 sqft

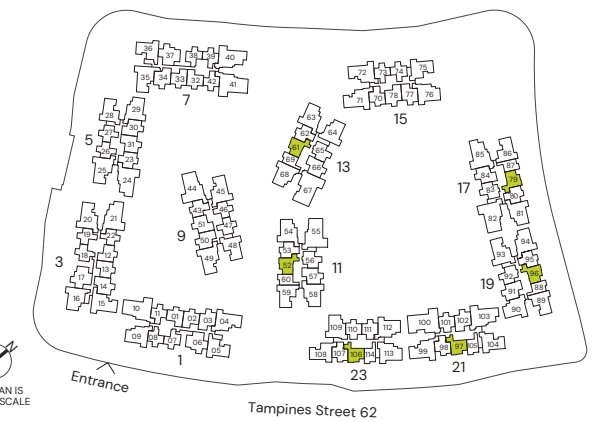
BLK 11 #02-52 to #07-52  
BLK 13 #02-61 to #12-61  
BLK 17 #02-79 to #12-79  
BLK 19 #02-96\* to #12-96\*  
BLK 21 #02-97 to #12-97  
BLK 23 #02-106 to #12-106



#### \* Mirrored Unit

0 1 2 3 4 5M

Area includes Private Enclosed Space (PES) or Balcony, where applicable. All AC ledges and RC ledges (non-load bearing) are excluded from strata area. The plans are subjected to change as may be required by relevant authorities. All areas and measurements stated herein as approximate and subject to final survey.



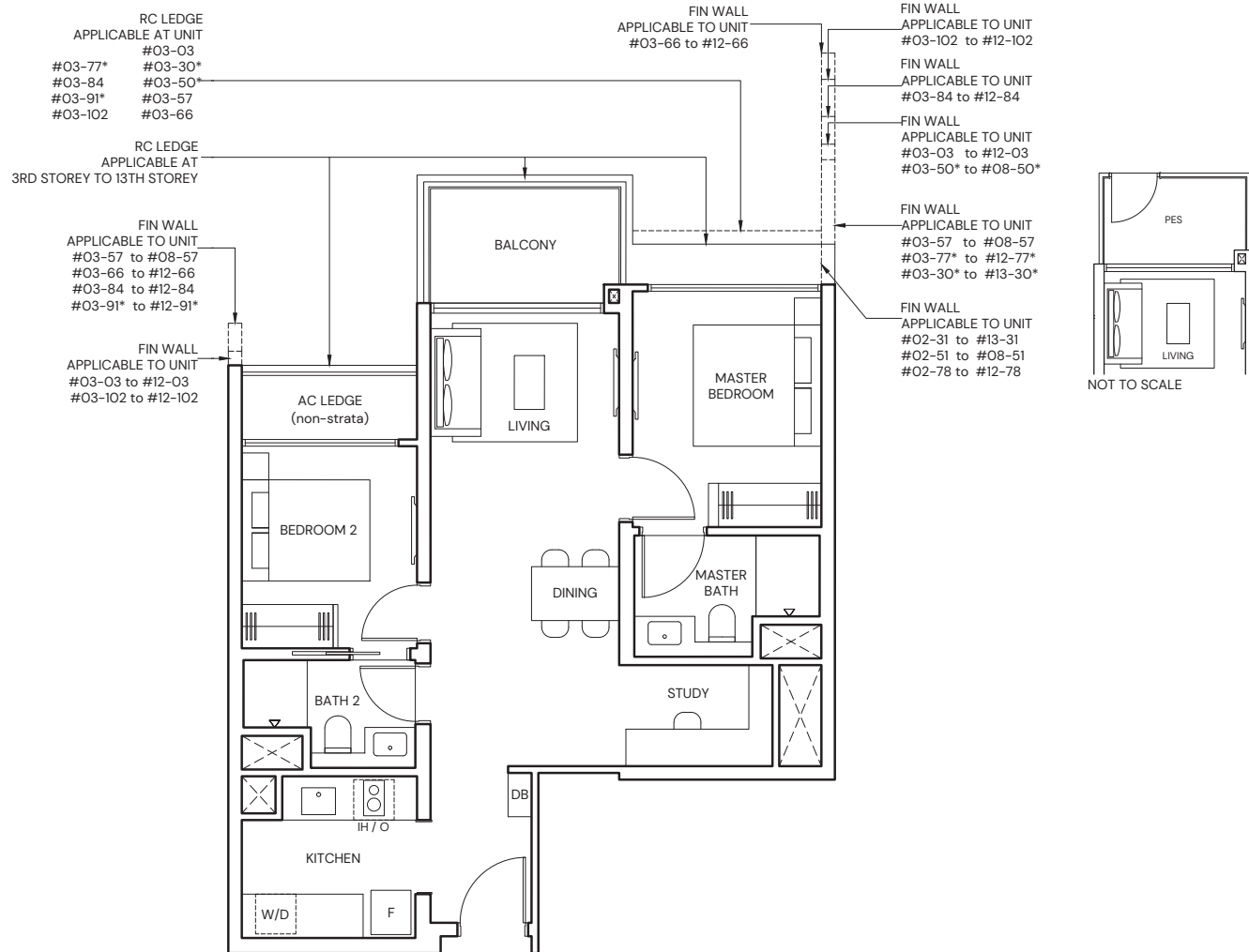


## 2-BEDROOM PREMIUM + STUDY

### TYPE BPS1

71 sqm / 764 sqft

BLK 1 #03-03 to #12-03	BLK 9 #03-51 to #08-51	BLK 15 #03-78 to #12-78
BLK 5 #03-30* to #13-30*	BLK 11 #03-57 to #08-57	BLK 17 #03-84 to #12-84
BLK 5 #03-31 to #13-31	BLK 13 #03-66 to #12-66	BLK 19 #03-91* to #12-91*
BLK 9 #03-50* to #08-50*	BLK 15 #03-77* to #12-77*	BLK 21 #03-102 to #12-102



\* Mirrored Unit



Area includes Private Enclosed Space (PES) or Balcony, where applicable. All AC ledges and RC ledges (non-load bearing) are excluded from strata area. The plans are subjected to change as may be required by relevant authorities. All areas and measurements stated herein as approximate and subject to final survey.

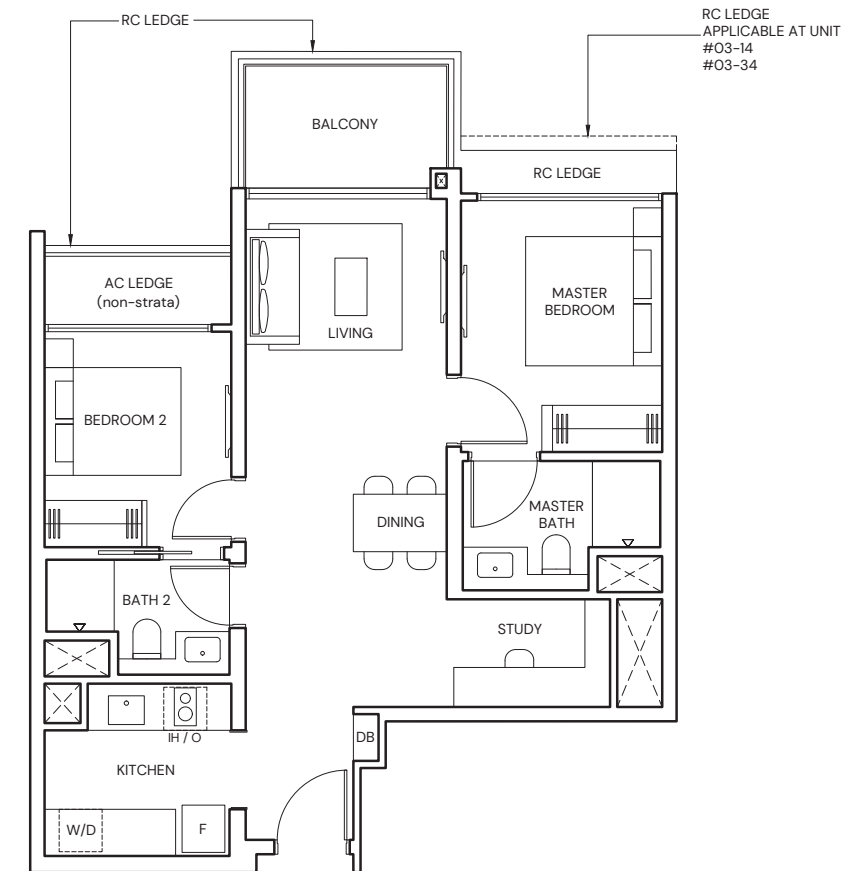


## 2-BEDROOM PREMIUM + STUDY

### TYPE BPS2

71 sqm / 764 sqft

BLK 3 #03-14 to #13-14  
BLK 7 #03-34 to #12-34



Area includes Private Enclosed Space (PES) or Balcony, where applicable. All AC ledges and RC ledges (non-load bearing) are excluded from strata area. The plans are subjected to change as may be required by relevant authorities. All areas and measurements stated herein as approximate and subject to final survey.







FOR ILLUSTRATION ONLY

## 3-BEDROOM

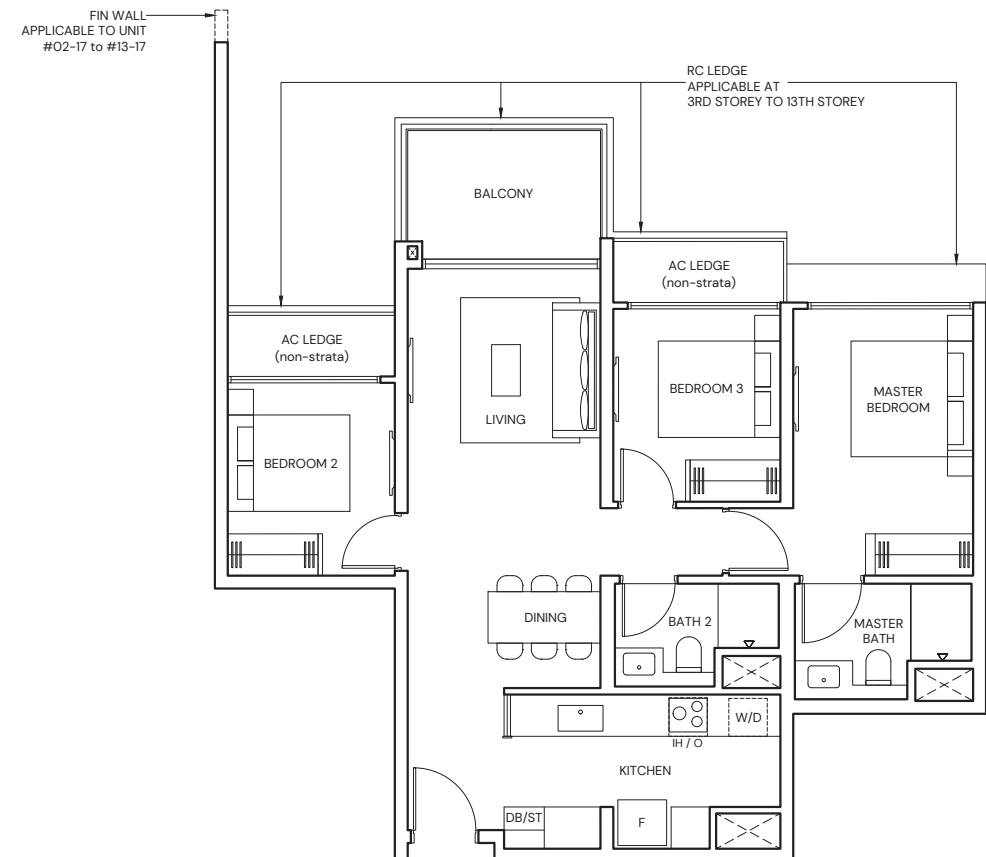
### TYPE C1

86 sqm / 926 sqft

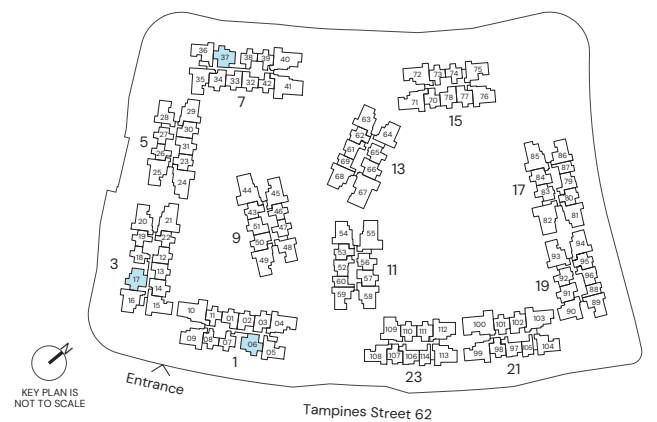
BLK 1 #02-06 to #12-06

BLK 3 #02-17 to #13-17

BLK 7 #02-37 to #12-37



Area includes Private Enclosed Space (PES) or Balcony, where applicable. All AC ledges and RC ledges (non-load bearing) are excluded from strata area. The plans are subjected to change as may be required by relevant authorities. All areas and measurements stated herein as approximate and subject to final survey.

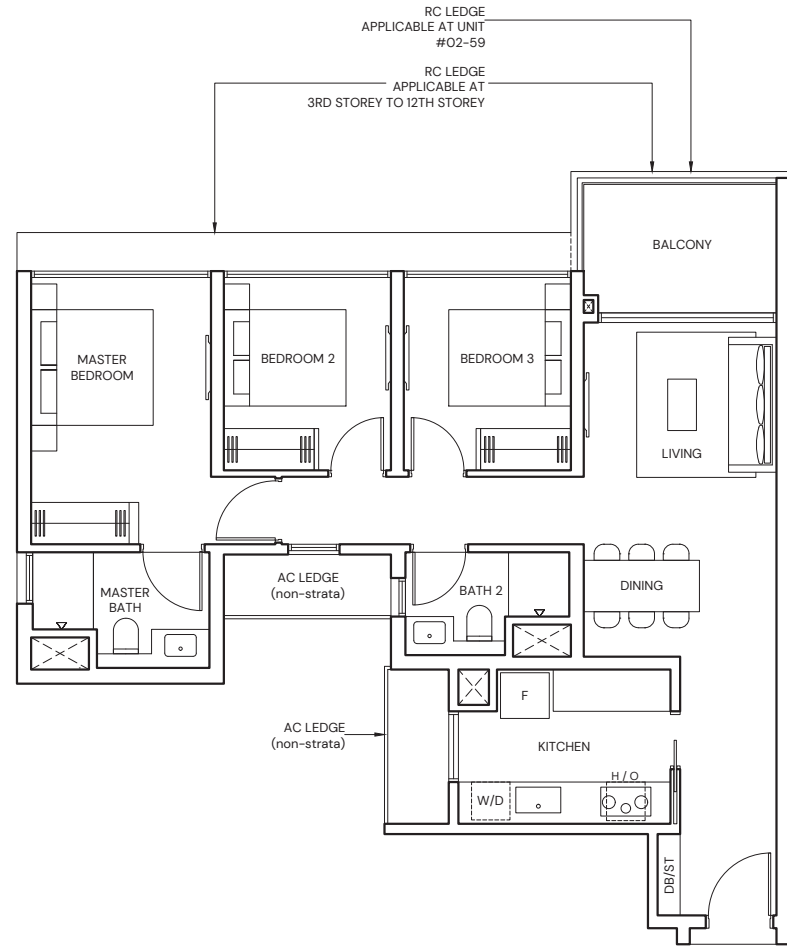


# 3-BEDROOM

## TYPE C2

87 sqm / 936 sqft

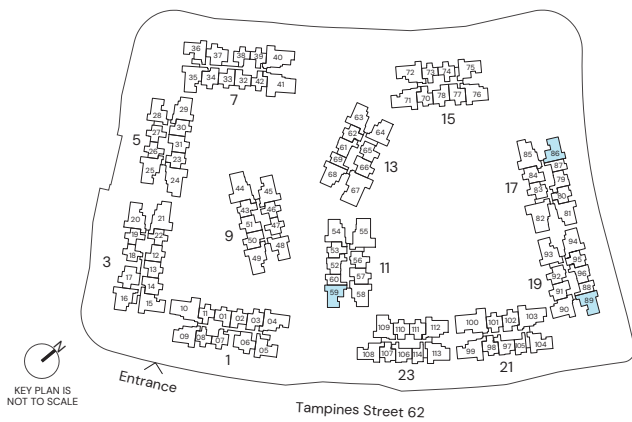
BLK 11 #02-59 to #07-59  
 BLK 17 #02-86 to #12-86  
 BLK 19 #02-89\* to #12-89\*



\* Mirrored Unit



Area includes Private Enclosed Space (PES) or Balcony, where applicable. All AC ledges and RC ledges (non-load bearing) are excluded from strata area. The plans are subjected to change as may be required by relevant authorities. All areas and measurements stated herein as approximate and subject to final survey.

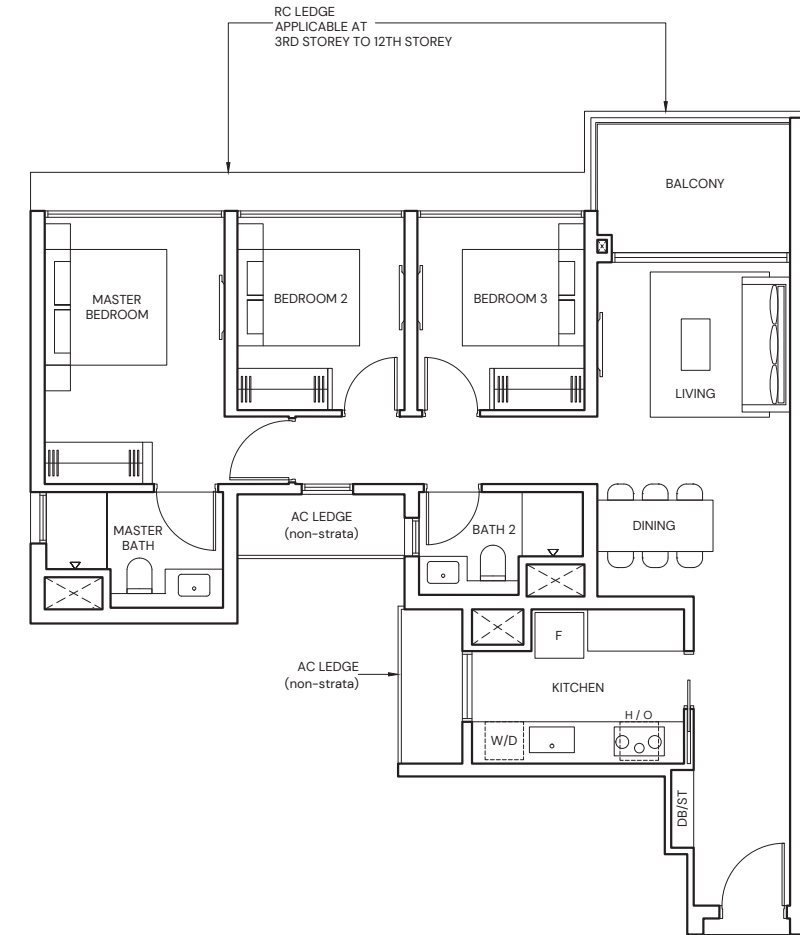


# 3-BEDROOM

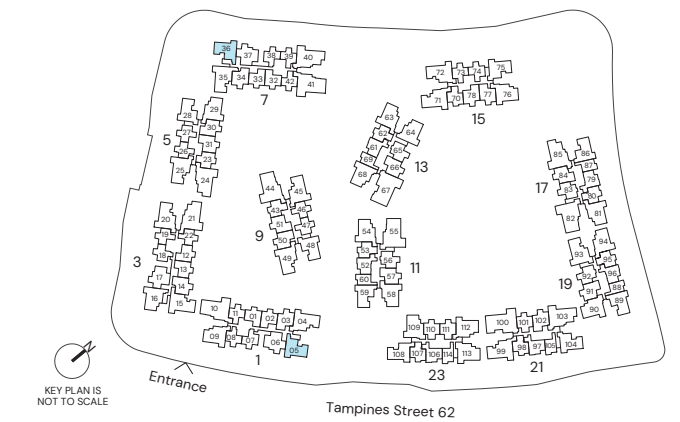
## TYPE C3

88 sqm / 947 sqft

BLK 1 #02-05 to #12-05  
 BLK 7 #02-36 to #12-36



Area includes Private Enclosed Space (PES) or Balcony, where applicable. All AC ledges and RC ledges (non-load bearing) are excluded from strata area. The plans are subjected to change as may be required by relevant authorities. All areas and measurements stated herein as approximate and subject to final survey.



# 3-BEDROOM

## TYPE C4

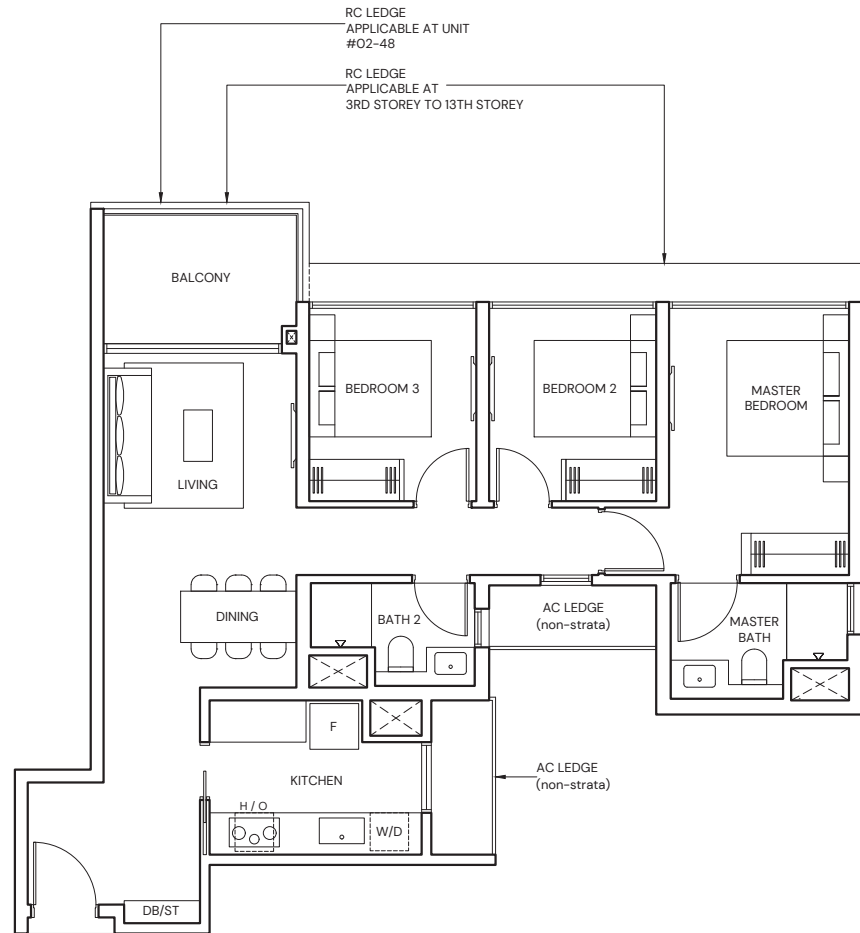
88 sqm / 947 sqft

BLK 5 #02-28 to #13-28

BLK 9 #02-48 to #07-48

BLK 15 #02-75 to #12-75

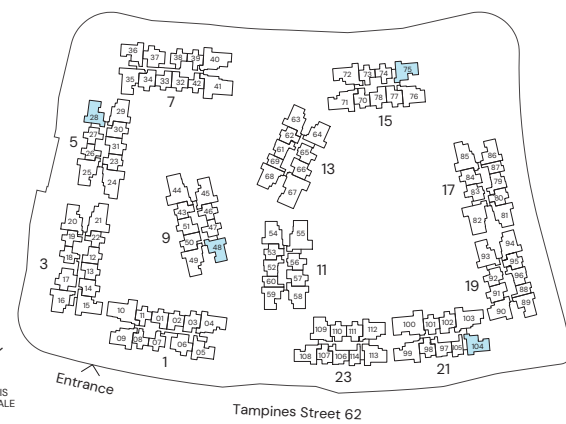
BLK 21 #02-104\* to #12-104\*



\* Mirrored Unit



Area includes Private Enclosed Space (PES) or Balcony, where applicable. All AC ledges and RC ledges (non-load bearing) are excluded from strata area. The plans are subjected to change as may be required by relevant authorities. All areas and measurements stated herein as approximate and subject to final survey.

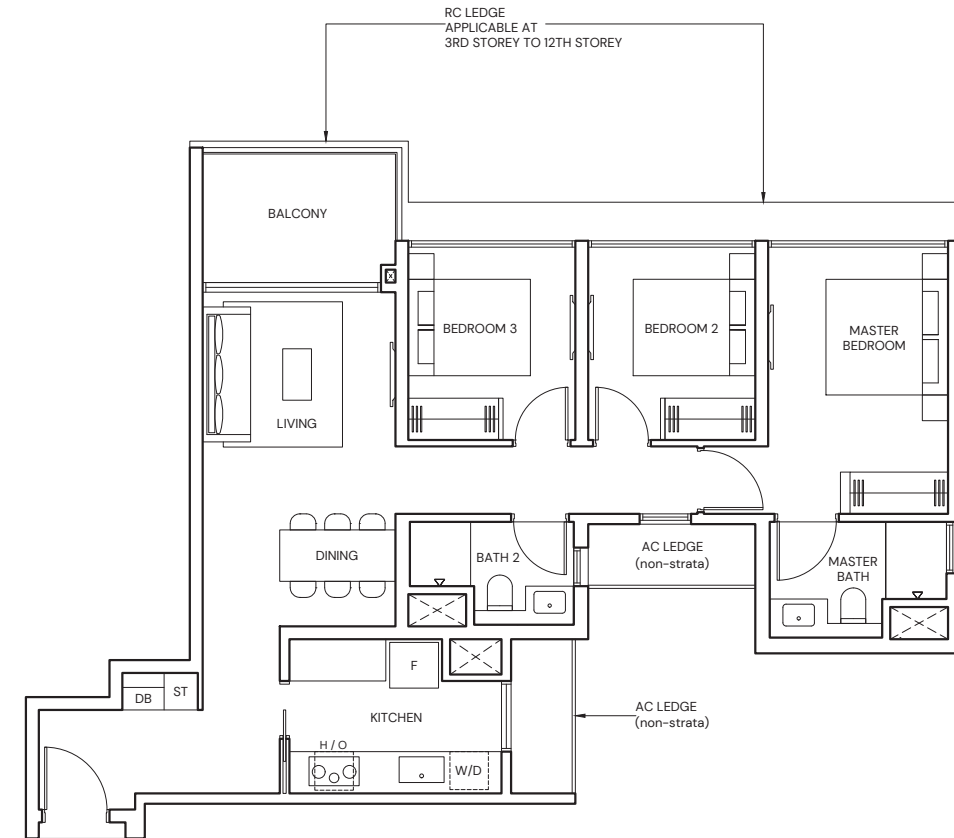


# 3-BEDROOM

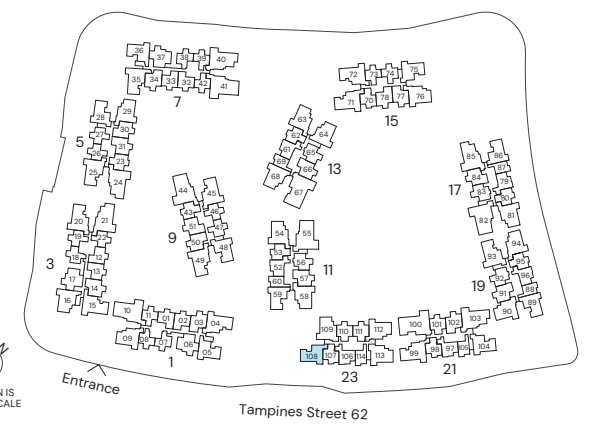
## TYPE C5

88 sqm / 947 sqft

BLK 23 #02-108 to #12-108



Area includes Private Enclosed Space (PES) or Balcony, where applicable. All AC ledges and RC ledges (non-load bearing) are excluded from strata area. The plans are subjected to change as may be required by relevant authorities. All areas and measurements stated herein as approximate and subject to final survey.



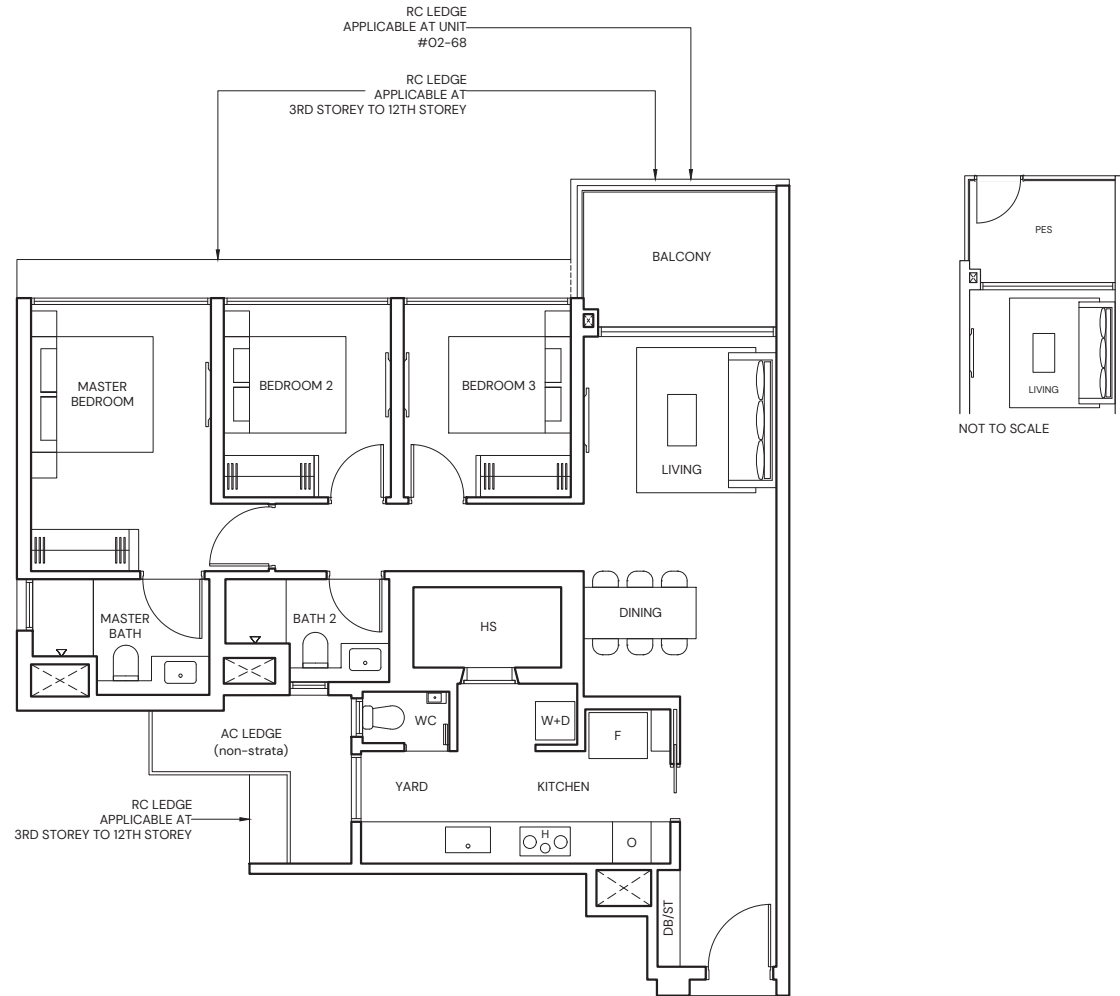
# 3-BEDROOM PREMIUM

**TYPE CP1**  
99 sqm / 1066 sqft

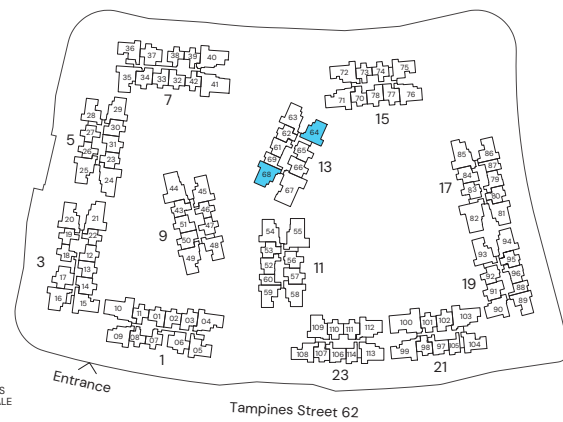
BLK 13 #03-64 to #12-64  
BLK 13 #02-68 to #12-68

**TYPE CP1(p)**  
99 sqm / 1066 sqft

BLK 13 #02-64



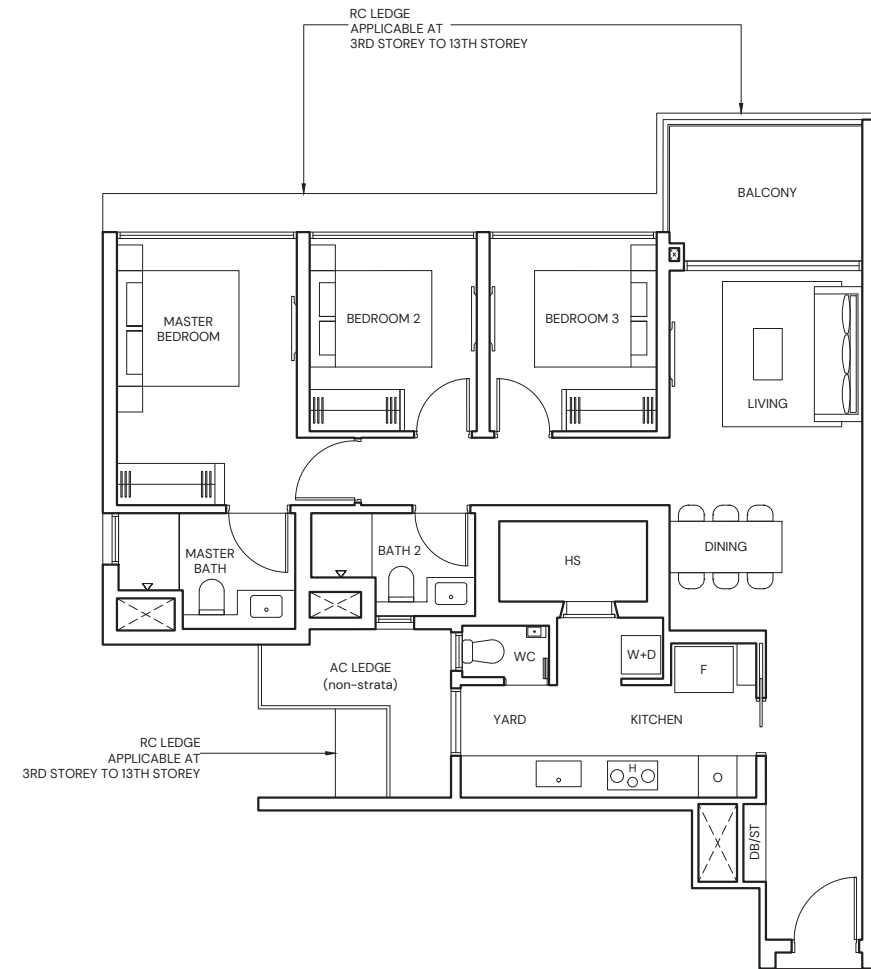
Area includes Private Enclosed Space (PES) or Balcony, where applicable. All AC ledges and RC ledges (non-load bearing) are excluded from strata area. The plans are subjected to change as may be required by relevant authorities. All areas and measurements stated herein as approximate and subject to final survey.



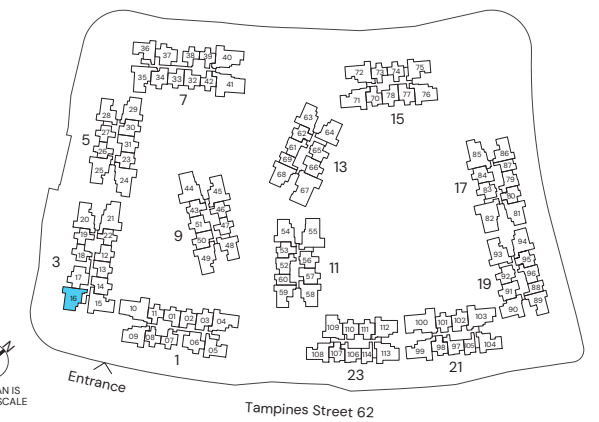
# 3-BEDROOM PREMIUM

**TYPE CP2**  
99 sqm / 1066 sqft

BLK 3 #02-16 to #13-16



Area includes Private Enclosed Space (PES) or Balcony, where applicable. All AC ledges and RC ledges (non-load bearing) are excluded from strata area. The plans are subjected to change as may be required by relevant authorities. All areas and measurements stated herein as approximate and subject to final survey.



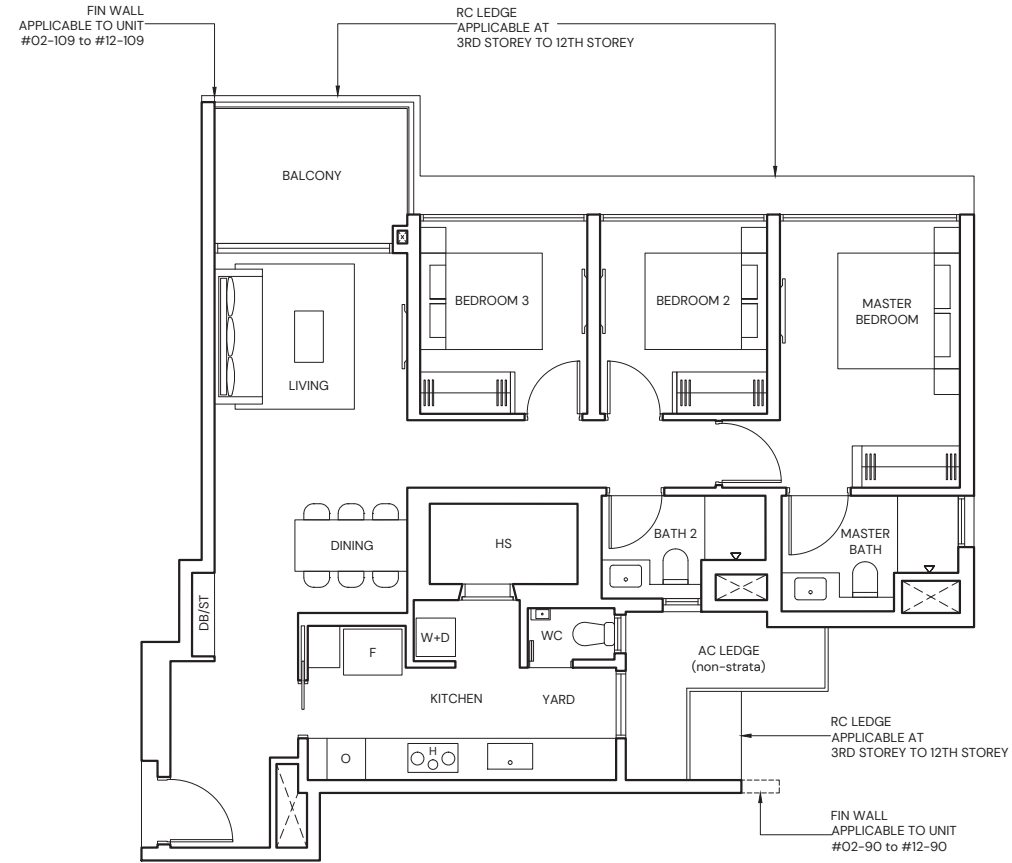


# 3-BEDROOM PREMIUM

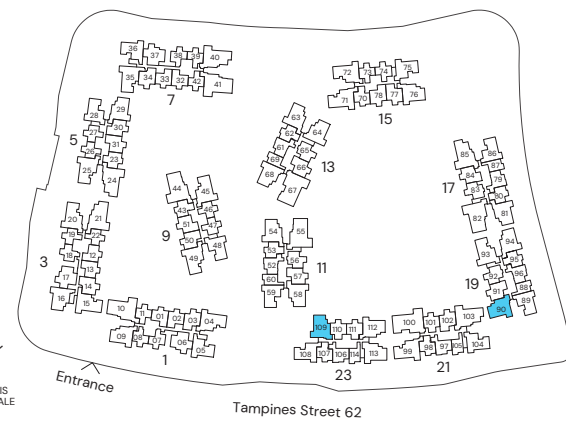
## TYPE CP3

99 sqm / 1066 sqft

BLK 19 #02-90 to #12-90  
BLK 23 #02-109 to #12-109



Area includes Private Enclosed Space (PES) or Balcony, where applicable. All AC ledges and RC ledges (non-load bearing) are excluded from strata area. The plans are subjected to change as may be required by relevant authorities. All areas and measurements stated herein as approximate and subject to final survey.

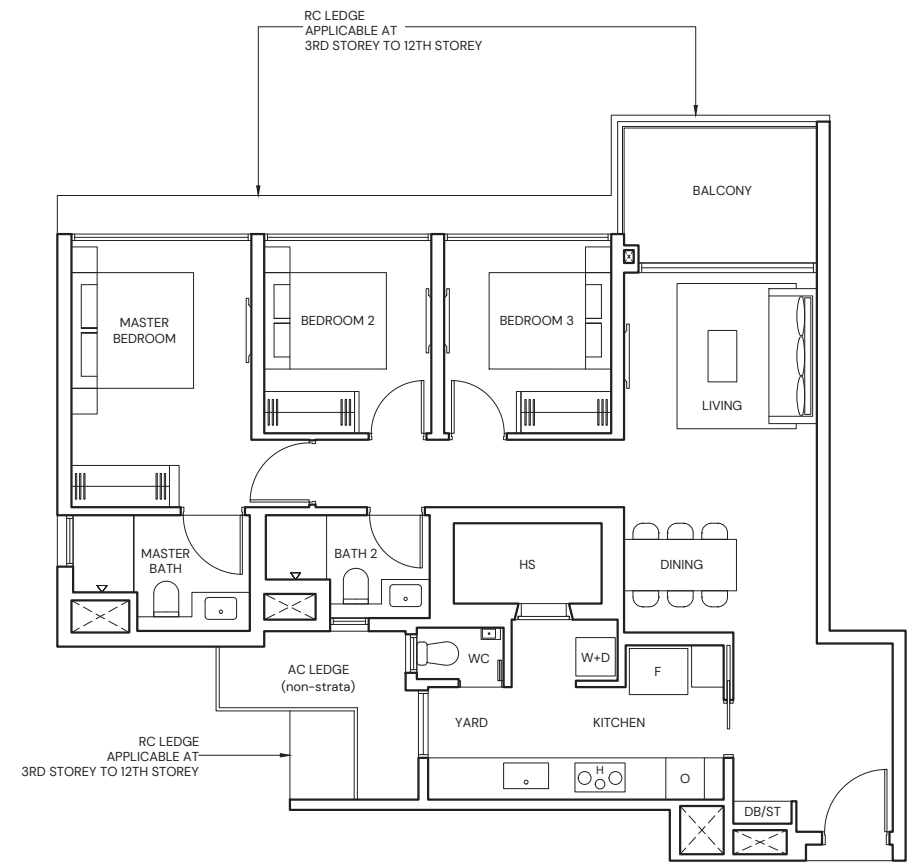


# 3-BEDROOM PREMIUM

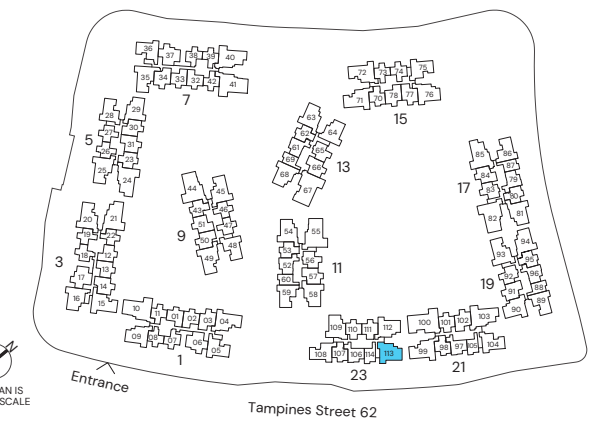
## TYPE CP4

99 sqm / 1066 sqft

BLK 23 #02-113 to #12-113



Area includes Private Enclosed Space (PES) or Balcony, where applicable. All AC ledges and RC ledges (non-load bearing) are excluded from strata area. The plans are subjected to change as may be required by relevant authorities. All areas and measurements stated herein as approximate and subject to final survey.



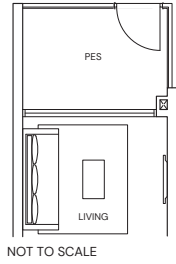
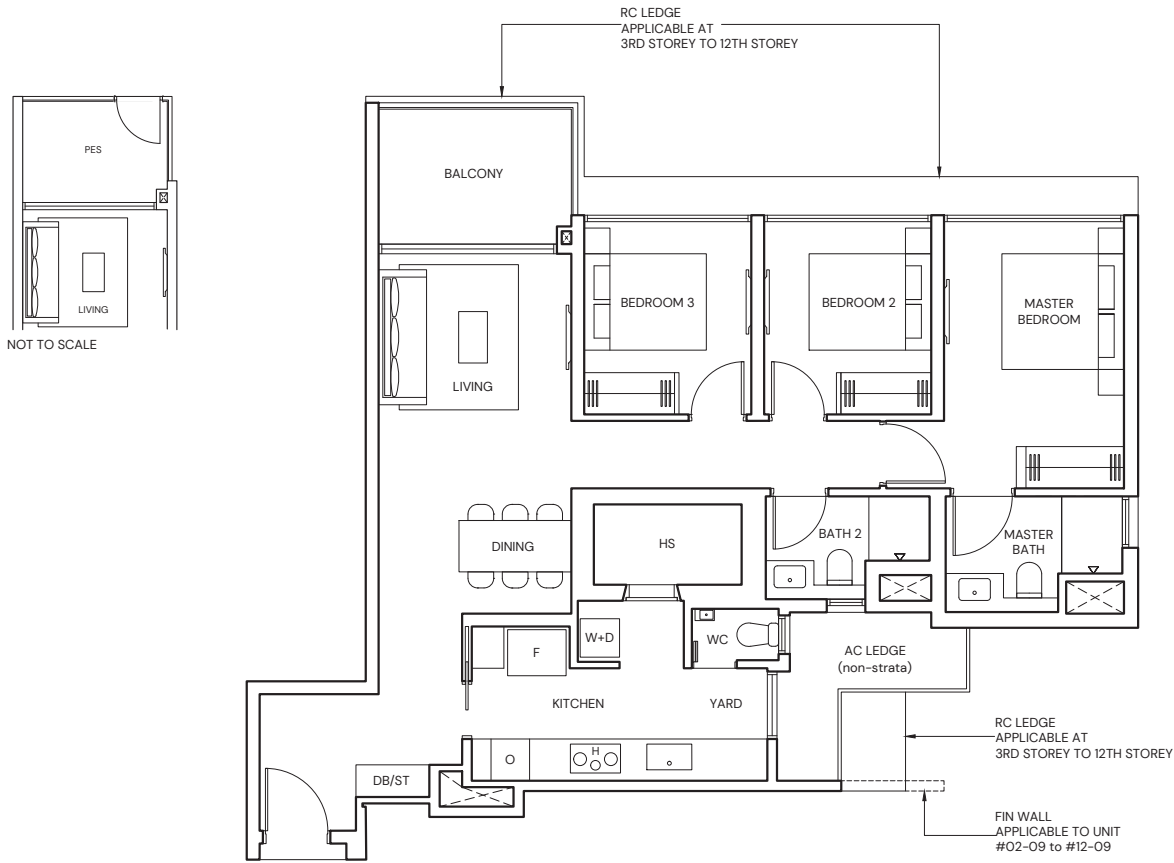
# 3-BEDROOM PREMIUM

**TYPE CP5**  
99 sqm / 1066 sqft

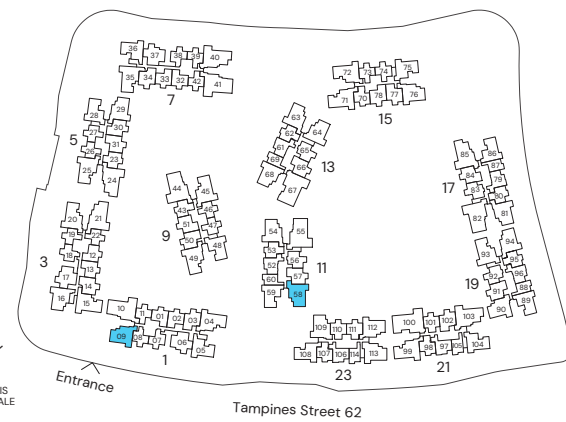
BLK 1 #02-09 to #12-09  
BLK 11 #03-58 to #08-58

**TYPE CP5(p)**  
99 sqm / 1066 sqft

BLK 11 #02-58



Area includes Private Enclosed Space (PES) or Balcony, where applicable. All AC ledges and RC ledges (non-load bearing) are excluded from strata area. The plans are subjected to change as may be required by relevant authorities. All areas and measurements stated herein as approximate and subject to final survey.



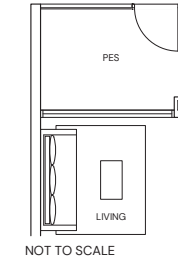
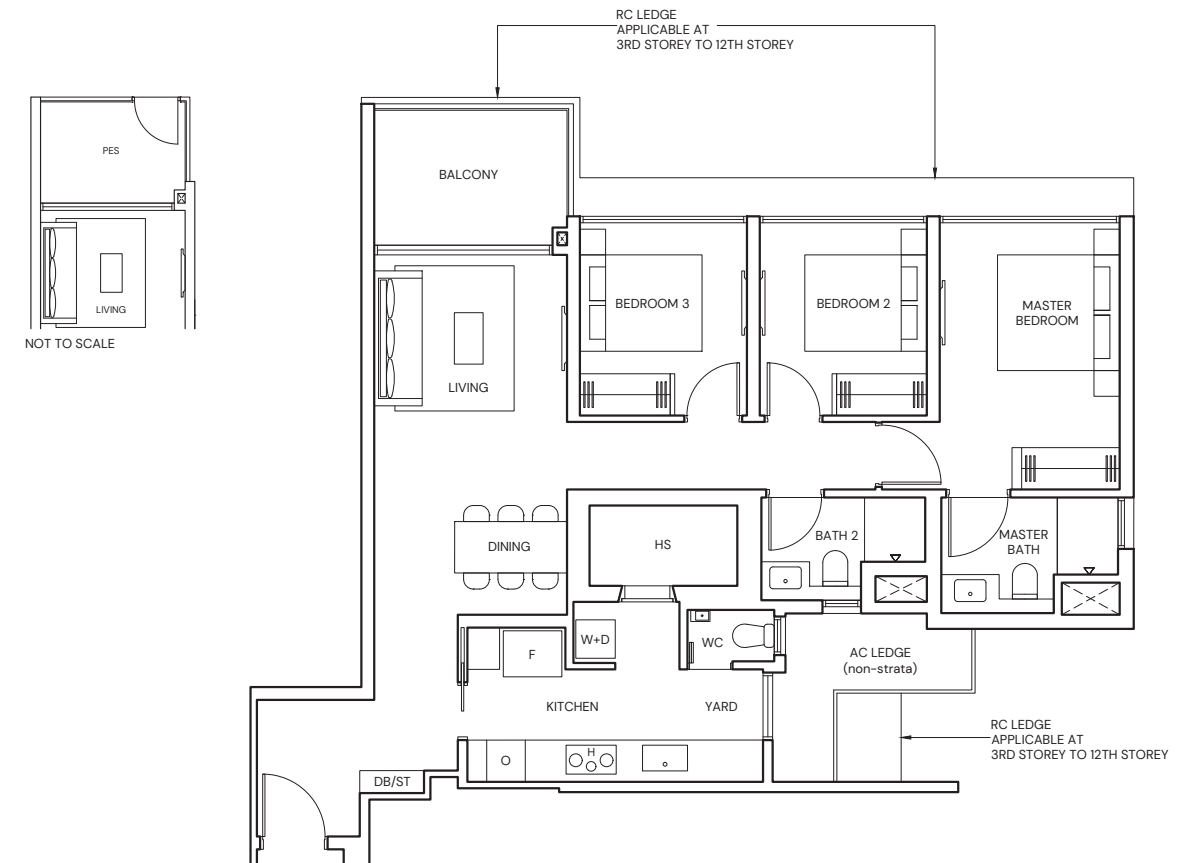
# 3-BEDROOM PREMIUM

**TYPE CP6**  
99 sqm / 1066 sqft

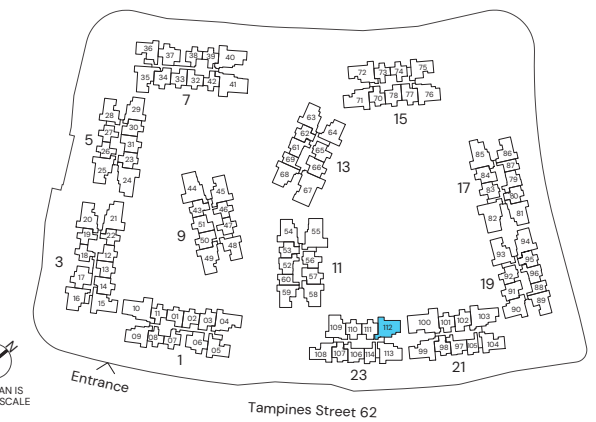
BLK 23 #03-112 to #12-112

**TYPE CP6(p)**  
99 sqm / 1066 sqft

BLK 23 #02-112



Area includes Private Enclosed Space (PES) or Balcony, where applicable. All AC ledges and RC ledges (non-load bearing) are excluded from strata area. The plans are subjected to change as may be required by relevant authorities. All areas and measurements stated herein as approximate and subject to final survey.



# 3-BEDROOM PREMIUM

## TYPE CP7

100 sqm / 1076 sqft

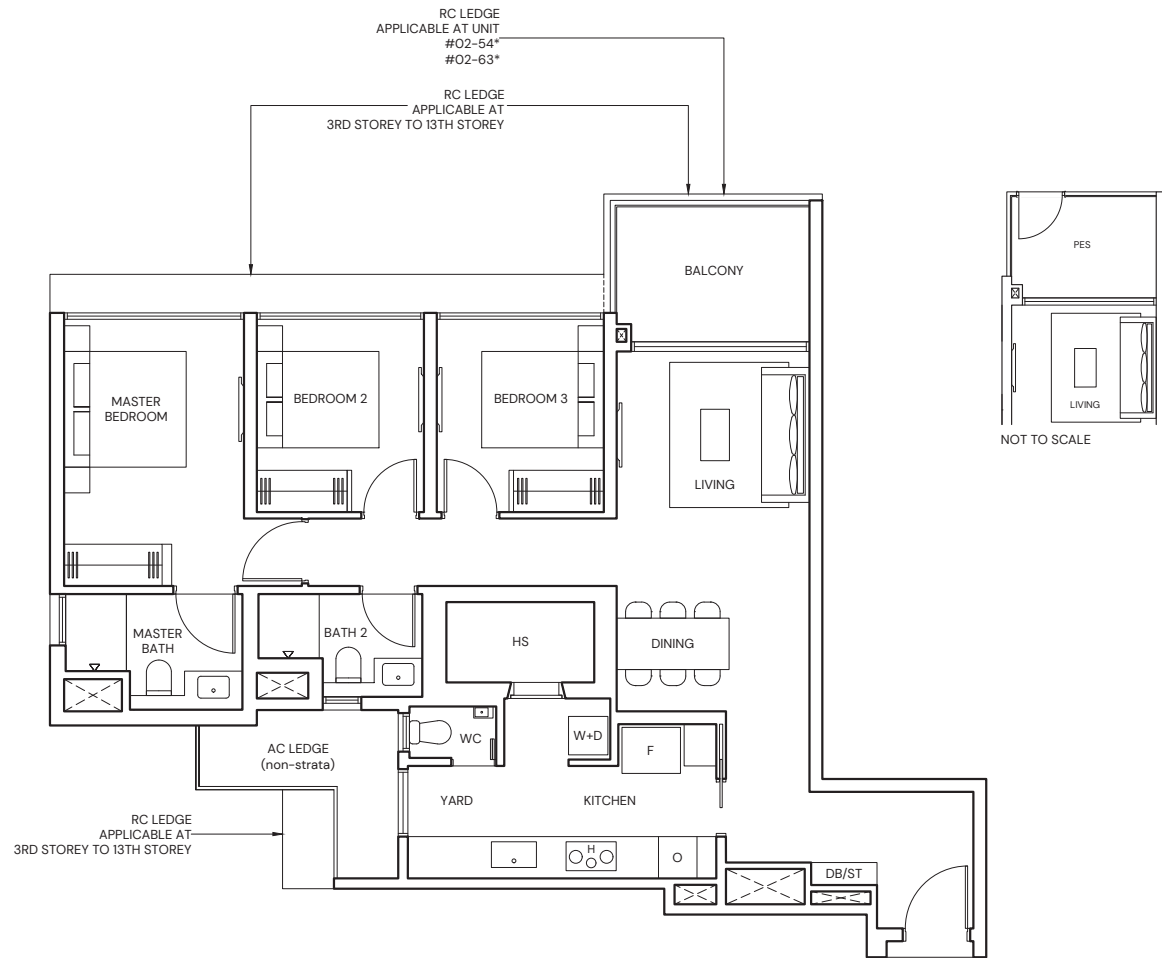
BLK 5 #03-29 to #13-29  
BLK 11 #02-54\* to #07-54\*  
BLK 13 #02-63\* to #12-63\*

BLK 15 #03-76 to #12-76  
BLK 17 #03-81\* to #12-81\*  
BLK 19 #02-94 to #12-94

## TYPE CP7(p)

100 sqm / 1076 sqft

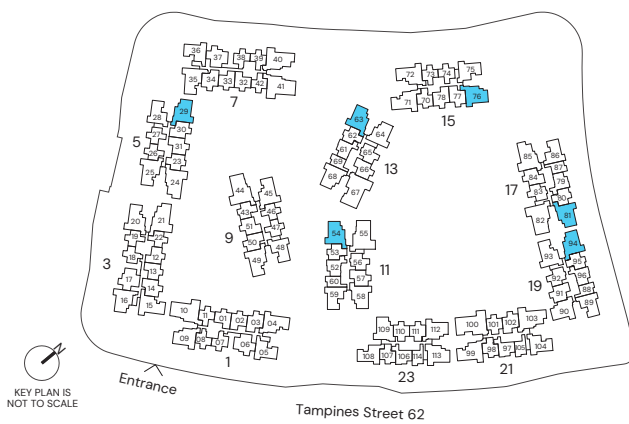
BLK 5 #02-29  
BLK 15 #02-76



\* Mirrored Unit



Area includes Private Enclosed Space (PES) or Balcony, where applicable. All AC ledges and RC ledges (non-load bearing) are excluded from strata area. The plans are subjected to change as may be required by relevant authorities. All areas and measurements stated herein as approximate and subject to final survey.

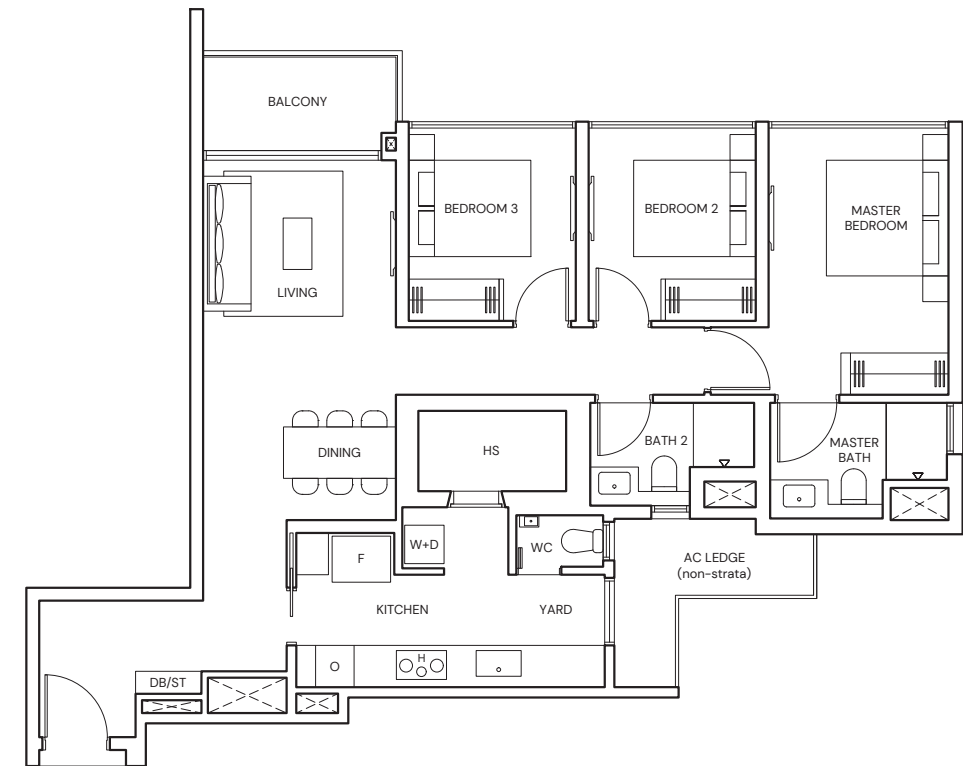


# 3-BEDROOM PREMIUM

## TYPE CP8

98 sqm / 1055 sqft

BLK 17 #02-81



Area includes Private Enclosed Space (PES) or Balcony, where applicable. All AC ledges and RC ledges (non-load bearing) are excluded from strata area. The plans are subjected to change as may be required by relevant authorities. All areas and measurements stated herein as approximate and subject to final survey.



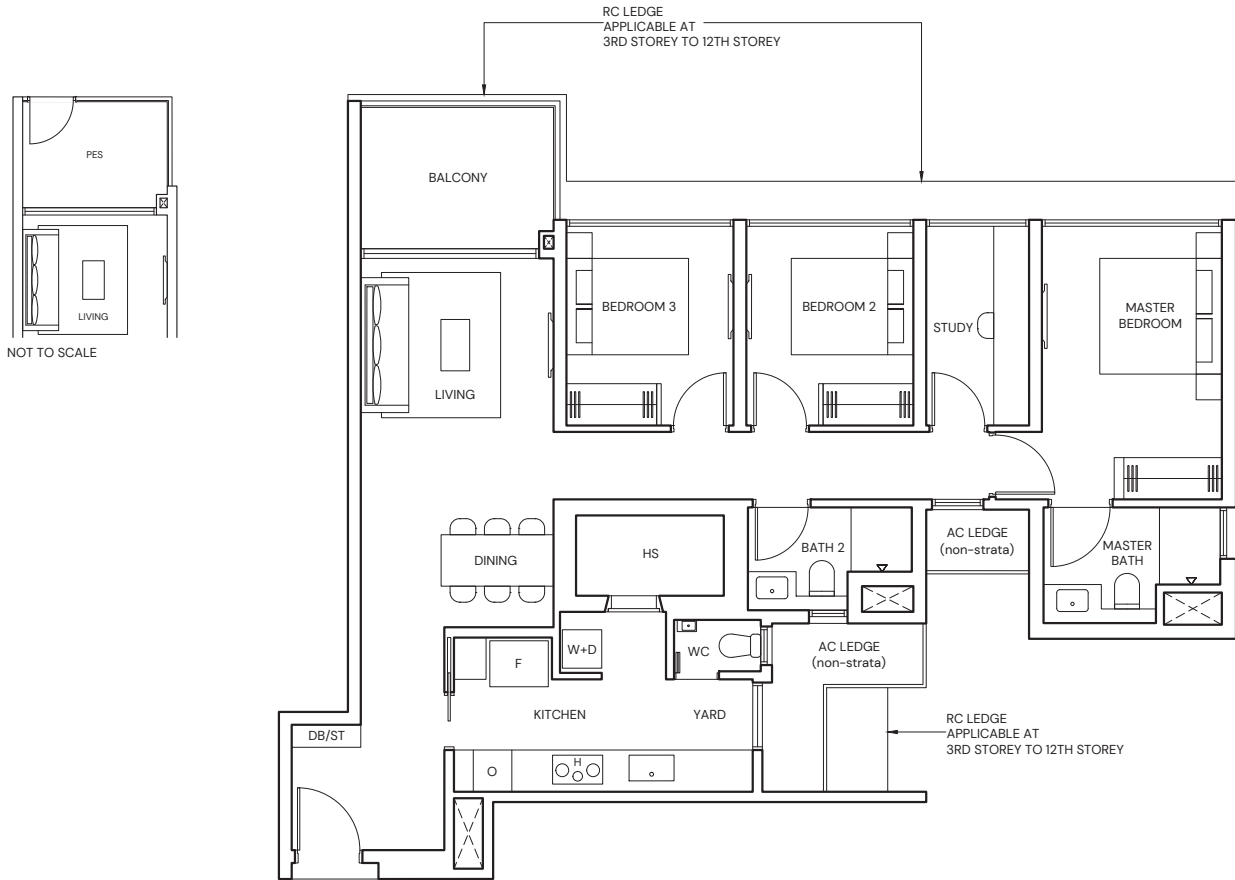
# 3-BEDROOM PREMIUM + STUDY

**TYPE CPS1**  
108 sqm / 1163 sqft

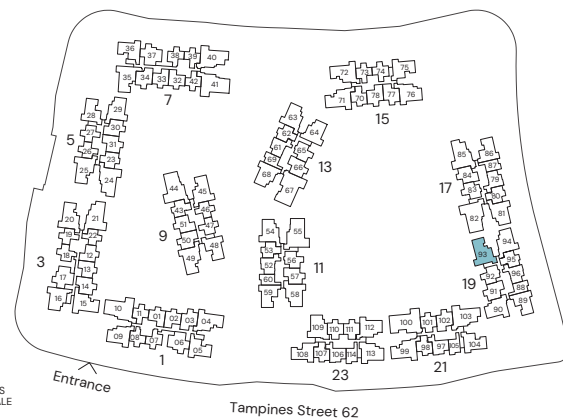
BLK 19 #03-93 to #12-93

**TYPE CPS1(p)**  
108 sqm / 1163 sqft

BLK 19 #02-93



Area includes Private Enclosed Space (PES) or Balcony, where applicable. All AC ledges and RC ledges (non-load bearing) are excluded from strata area. The plans are subjected to change as may be required by relevant authorities. All areas and measurements stated herein as approximate and subject to final survey.



# 3-BEDROOM PREMIUM + STUDY

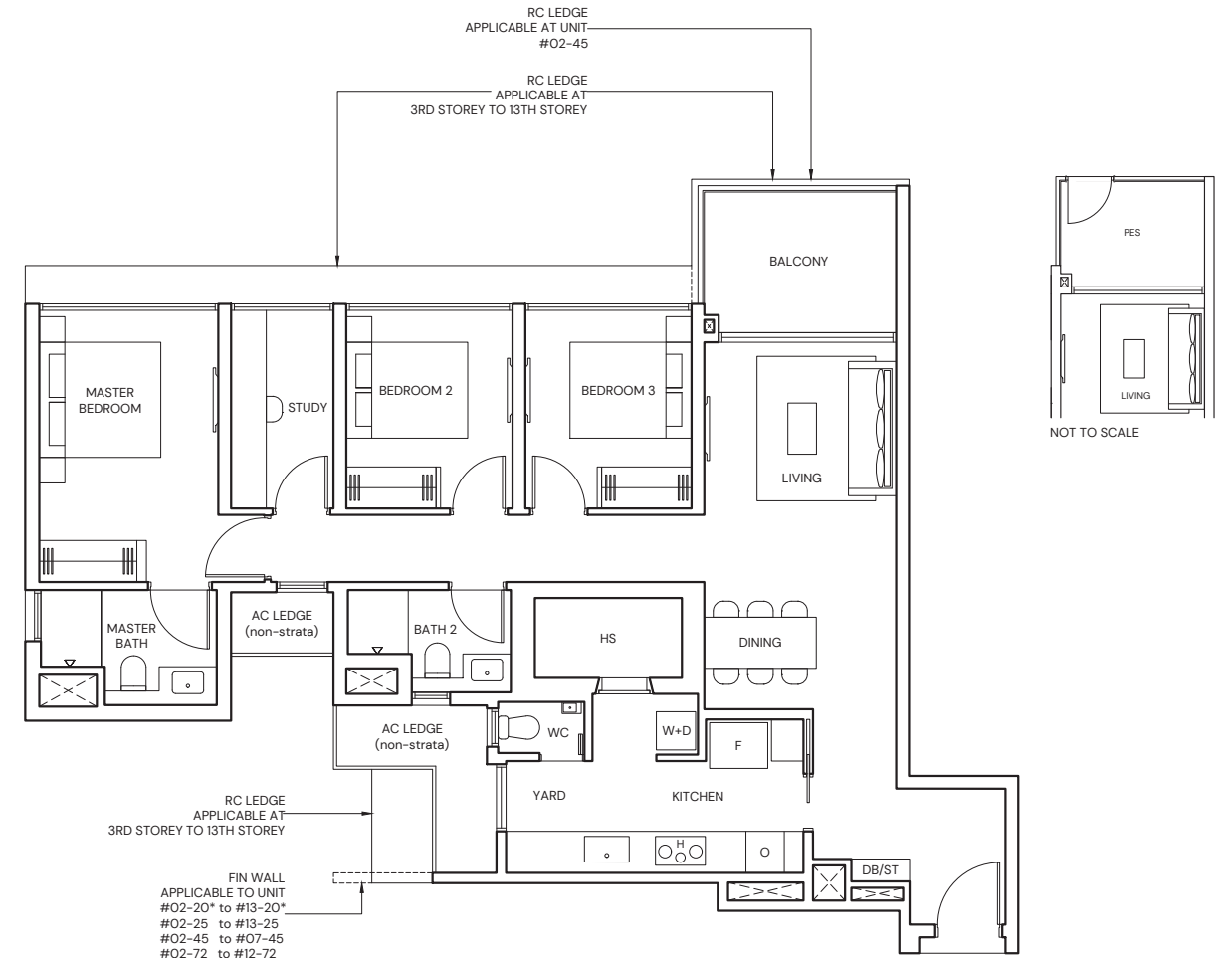
**TYPE CPS2**  
108 sqm / 1163 sqft

BLK 1 #03-04\* to #12-04\*  
BLK 3 #02-20\* to #13-20\*

BLK 5 #02-25 to #13-25  
BLK 9 #02-45 to #07-45  
BLK 15 #02-72 to #12-72

**TYPE CPS2(p)**  
108 sqm / 1163 sqft

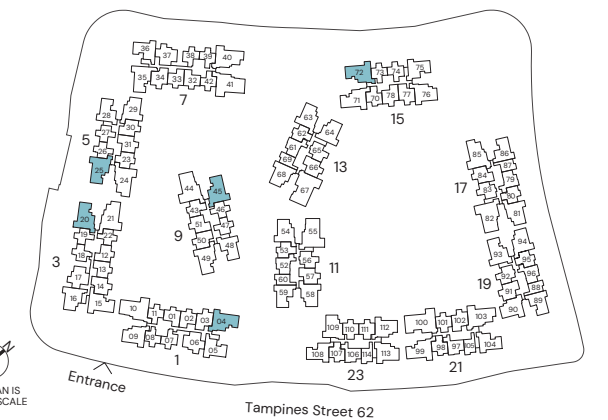
BLK 1 #02-04\*



\* Mirrored Unit



Area includes Private Enclosed Space (PES) or Balcony, where applicable. All AC ledges and RC ledges (non-load bearing) are excluded from strata area. The plans are subjected to change as may be required by relevant authorities. All areas and measurements stated herein as approximate and subject to final survey.





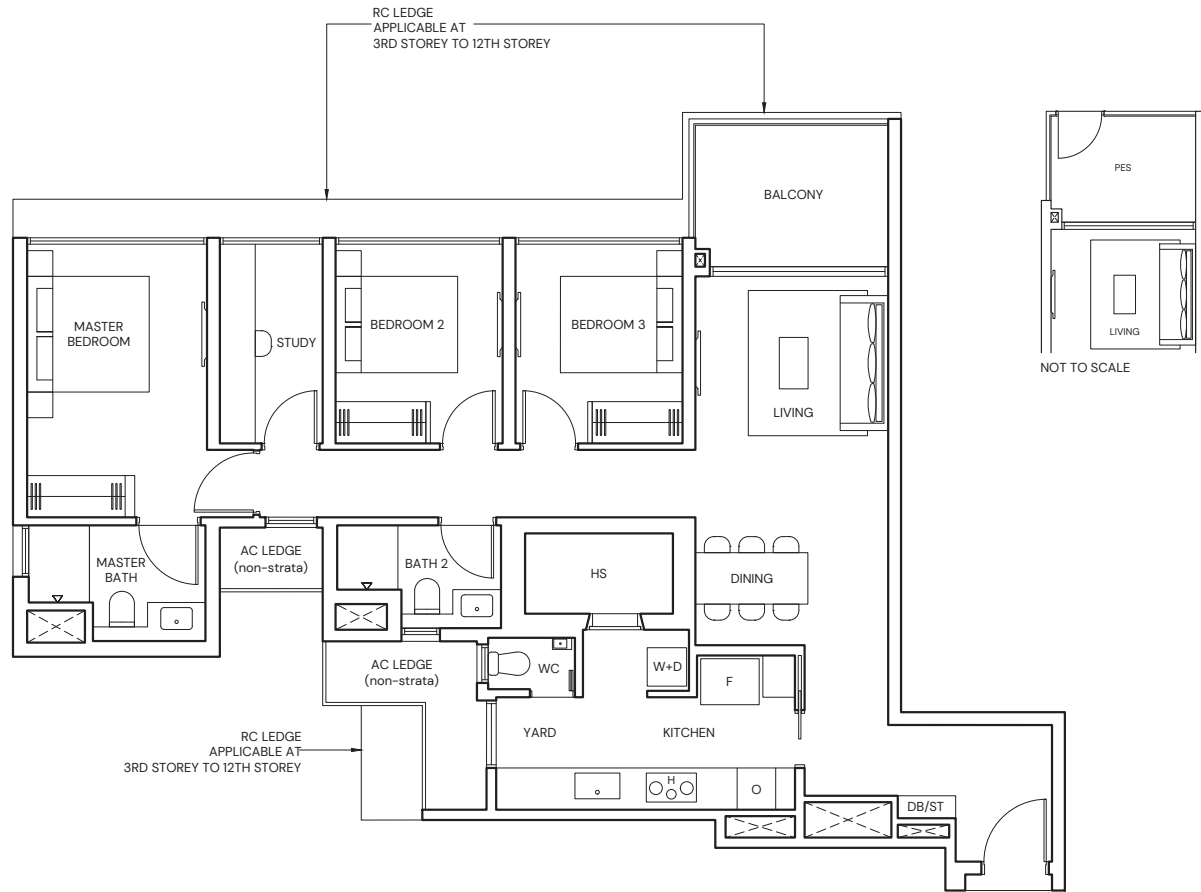
# 3-BEDROOM PREMIUM + STUDY

**TYPE CPS3**  
109 sqm / 1173 sqft

BLK 9 #03-49 to #08-49  
BLK 15 #03-71\* to #12-71\*

**TYPE CPS3(p)**  
109 sqm / 1173 sqft

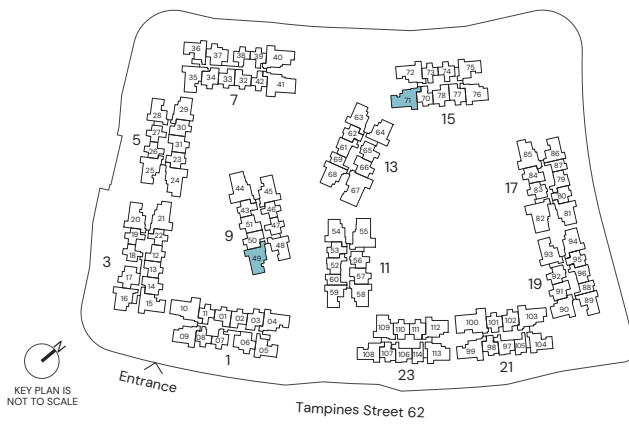
BLK 9 #02-49  
BLK 15 #02-71\*



\* Mirrored Unit



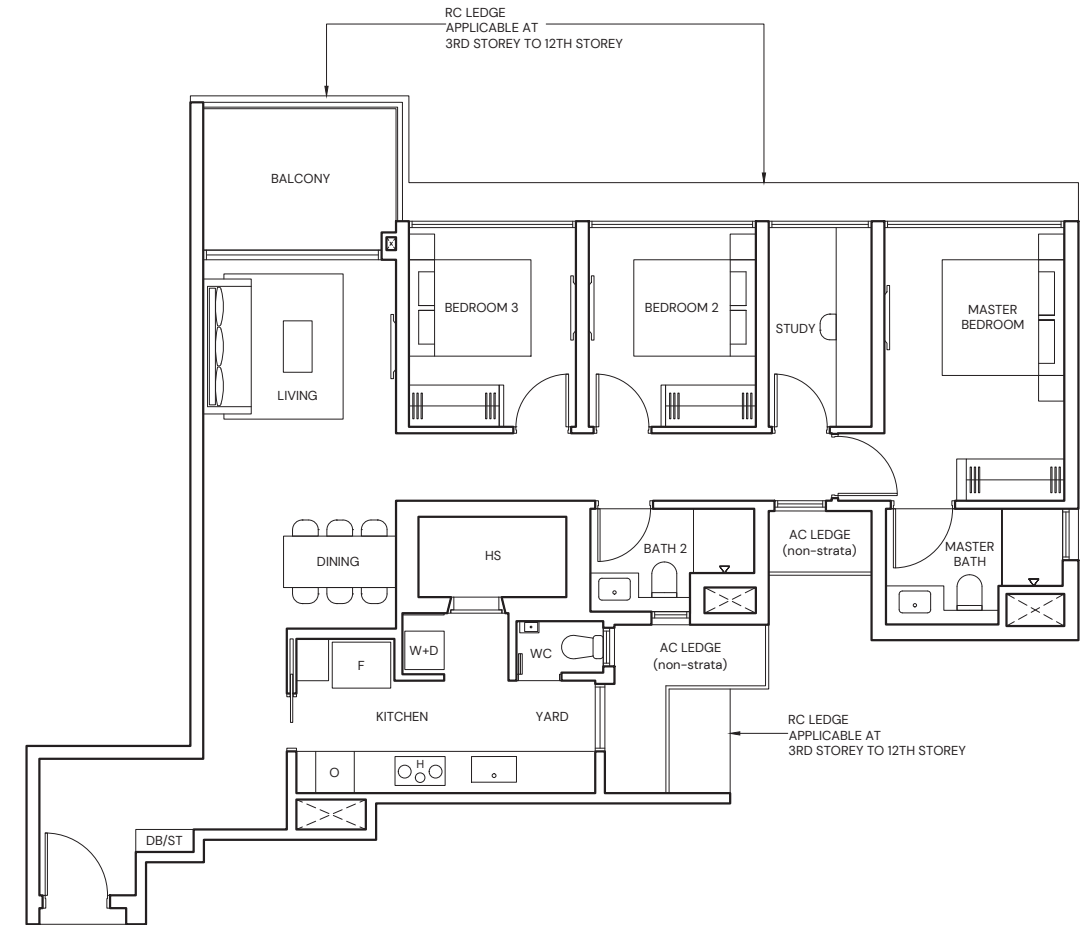
Area includes Private Enclosed Space (PES) or Balcony, where applicable. All AC ledges and RC ledges (non-load bearing) are excluded from strata area. The plans are subjected to change as may be required by relevant authorities. All areas and measurements stated herein as approximate and subject to final survey.



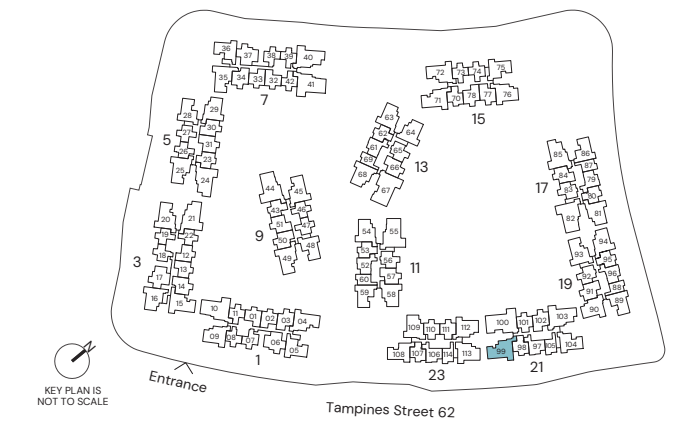
# 3-BEDROOM PREMIUM + STUDY

**TYPE CPS4**  
110 sqm / 1184 sqft

BLK 21 #02-99 to #12-99



Area includes Private Enclosed Space (PES) or Balcony, where applicable. All AC ledges and RC ledges (non-load bearing) are excluded from strata area. The plans are subjected to change as may be required by relevant authorities. All areas and measurements stated herein as approximate and subject to final survey.



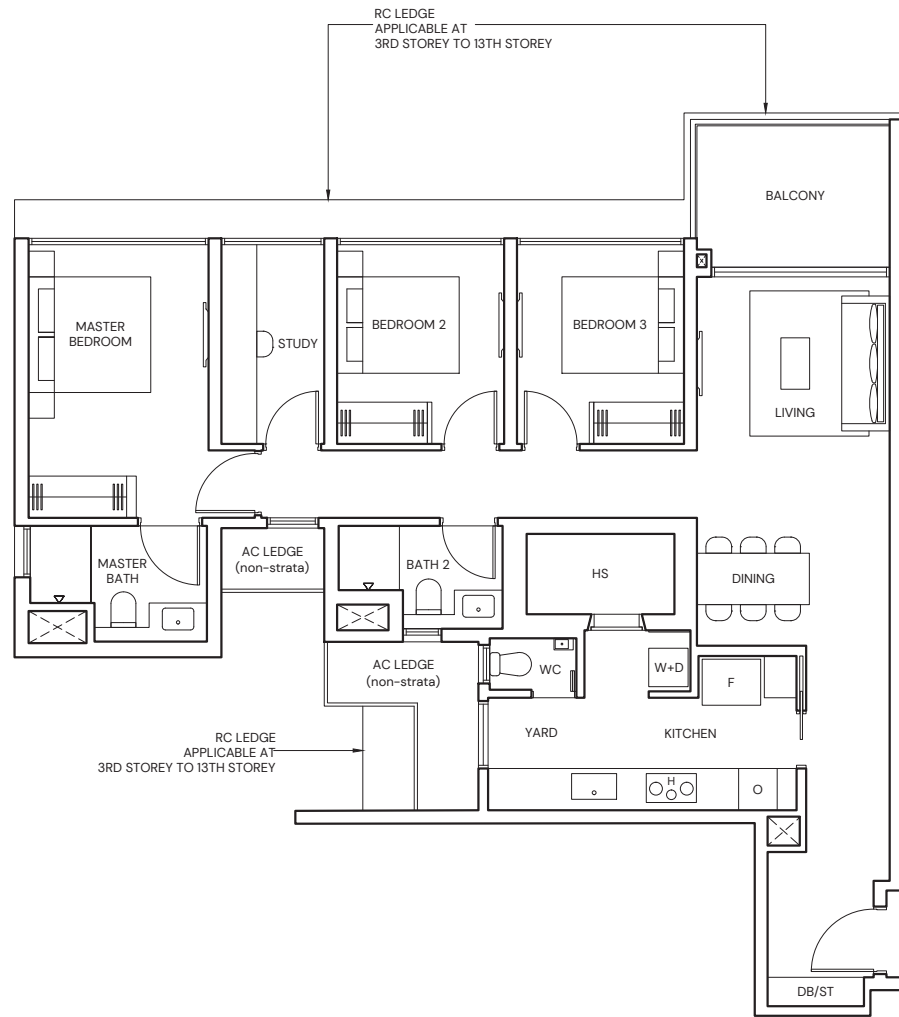
# 3-BEDROOM PREMIUM + STUDY

TYPE CPS5

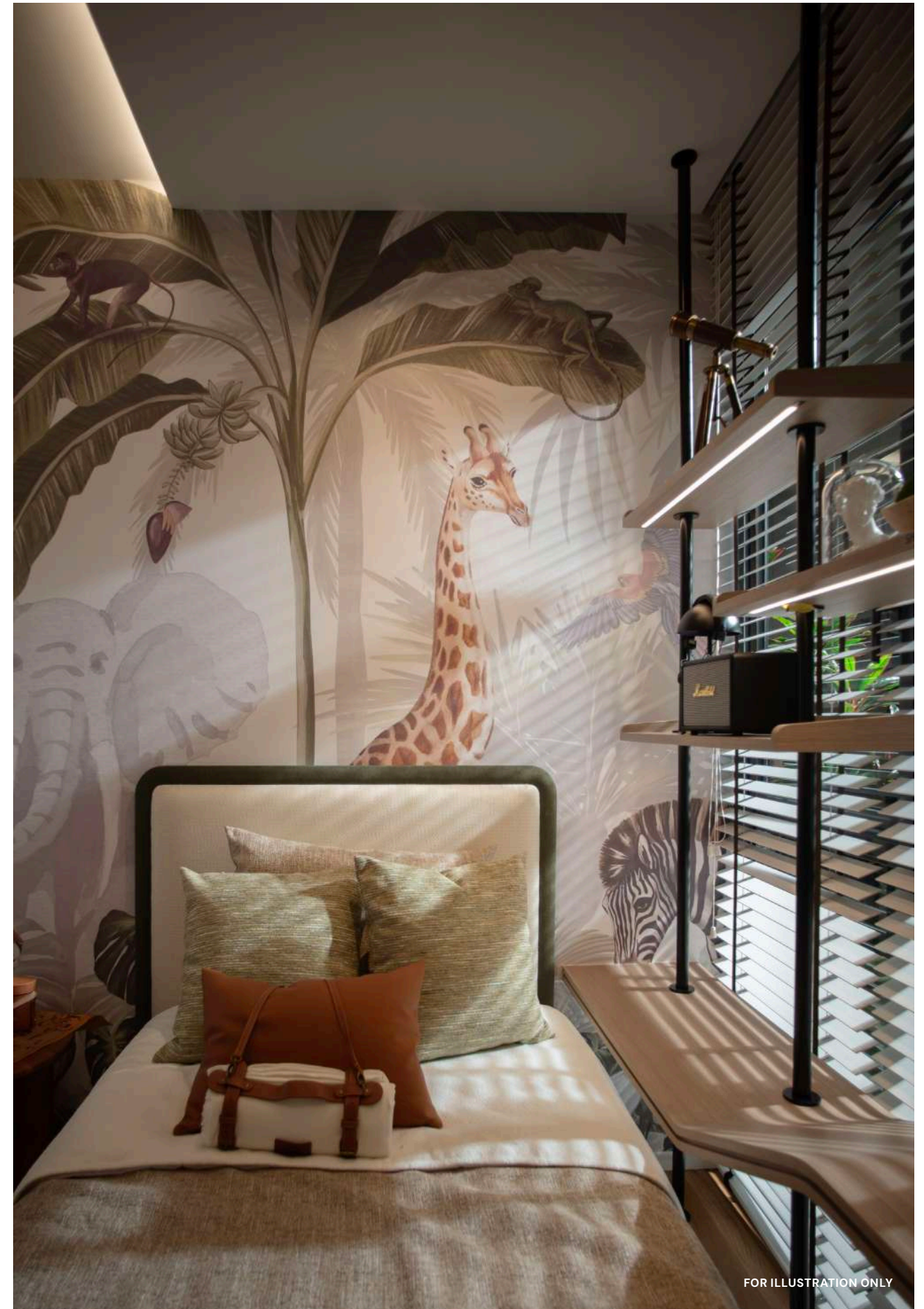
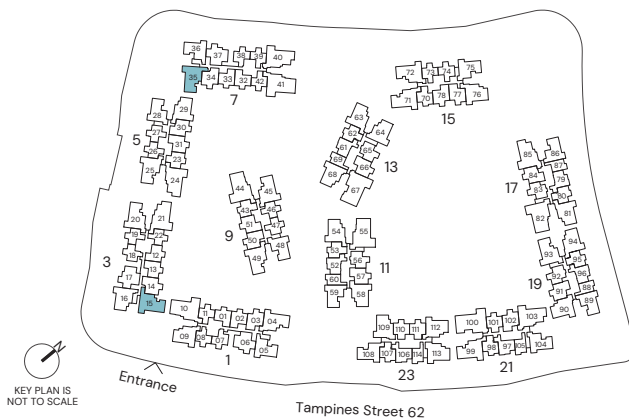
110 sqm / 1184 sqft

BLK 3 #02-15 to #13-15

BLK 7 #02-35 to #12-35



Area includes Private Enclosed Space (PES) or Balcony, where applicable. All AC ledges and RC ledges (non-load bearing) are excluded from strata area. The plans are subjected to change as may be required by relevant authorities. All areas and measurements stated herein as approximate and subject to final survey.



FOR ILLUSTRATION ONLY

# 4-BEDROOM

## TYPE D1

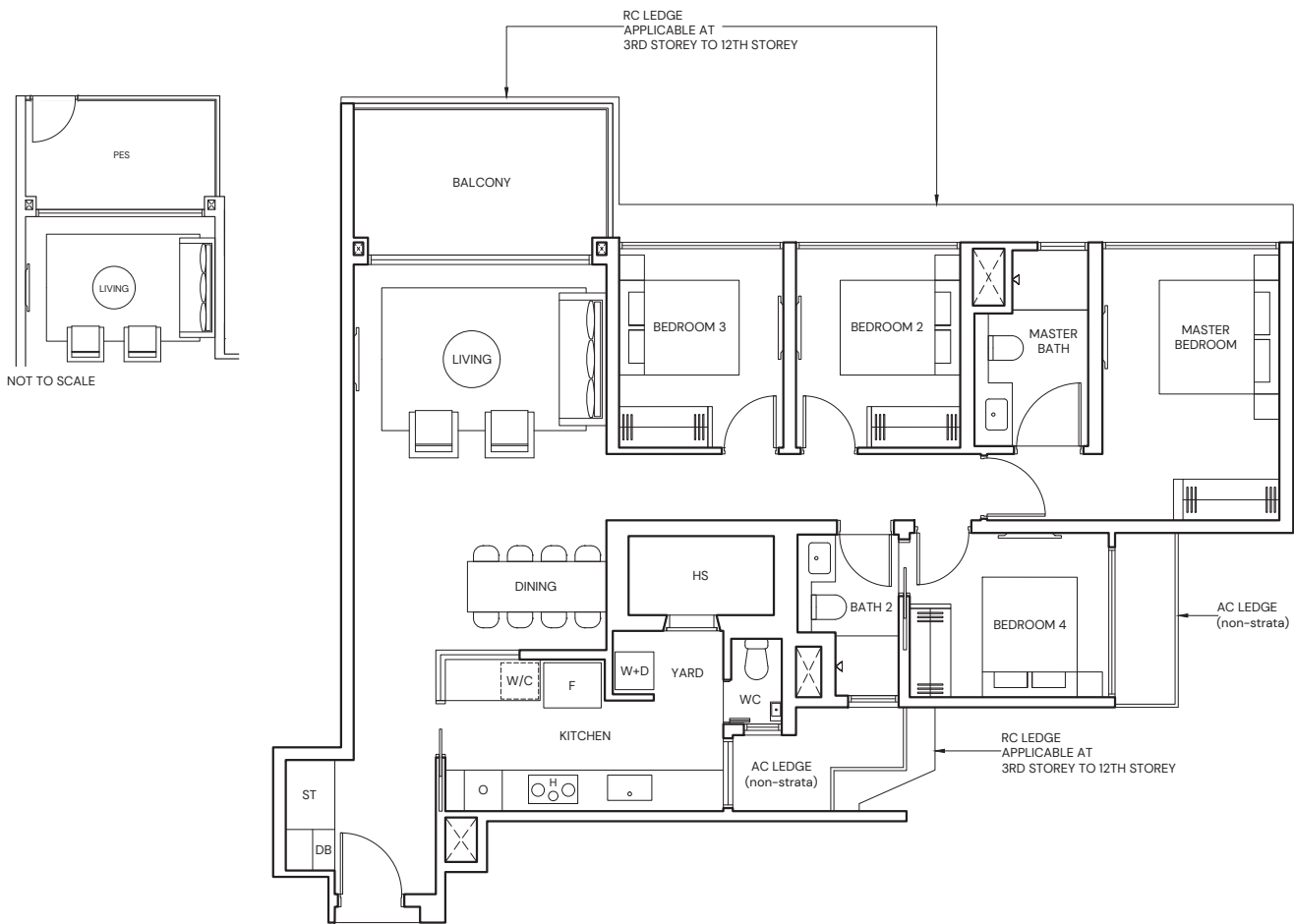
124 sqm / 1335 sqft

BLK 21 #03-103 to #12-103

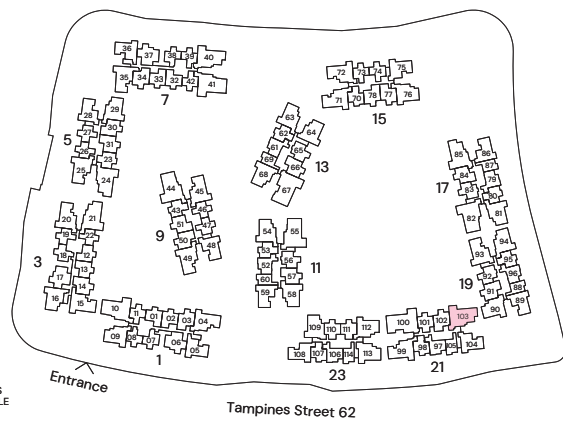
## TYPE D1(p)

124 sqm / 1335 sqft

BLK 21 #02-103



Area includes Private Enclosed Space (PES) or Balcony, where applicable. All AC ledges and RC ledges (non-load bearing) are excluded from strata area. The plans are subjected to change as may be required by relevant authorities. All areas and measurements stated herein as approximate and subject to final survey.



# 4-BEDROOM

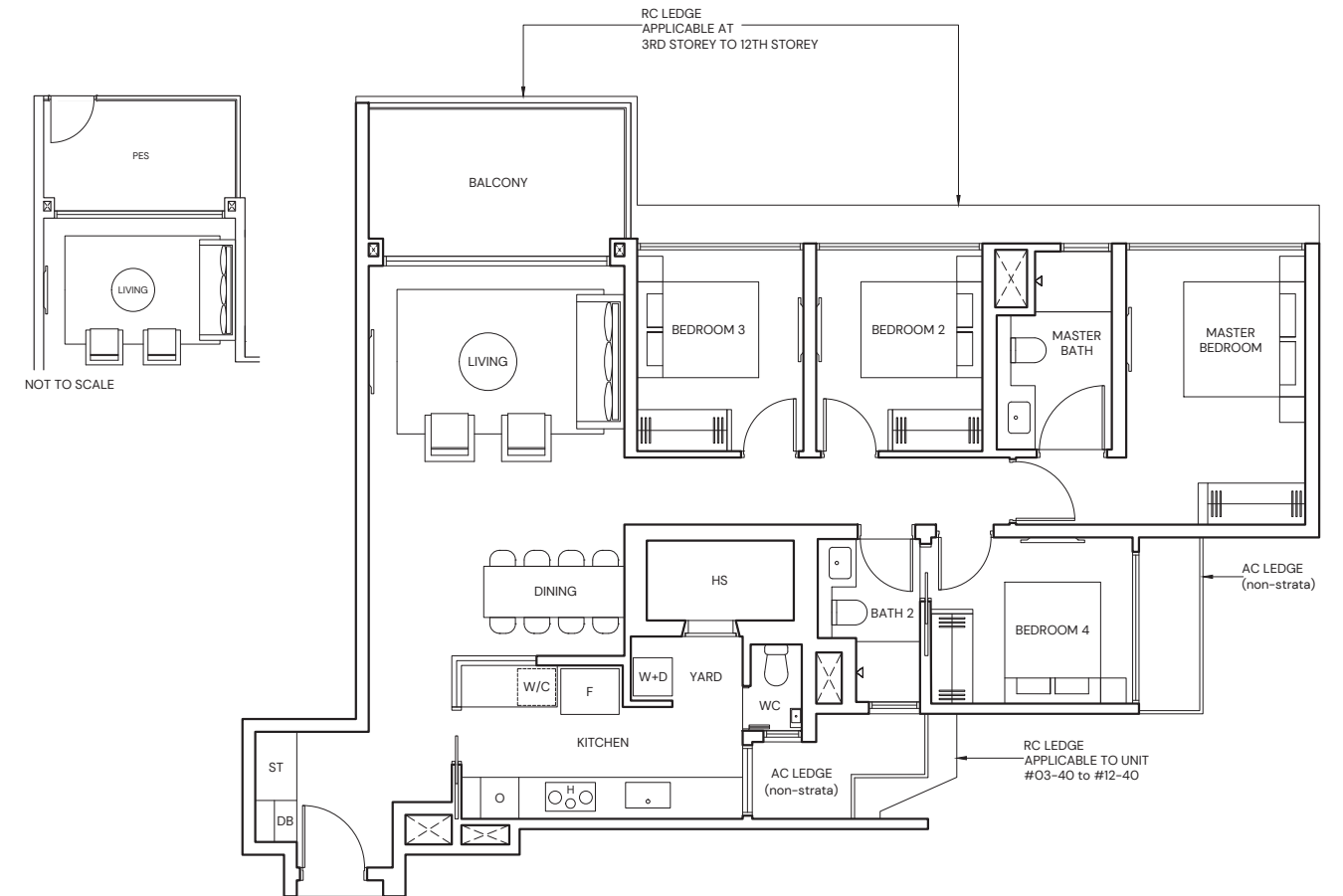
## TYPE D2

124 sqm / 1335 sqft

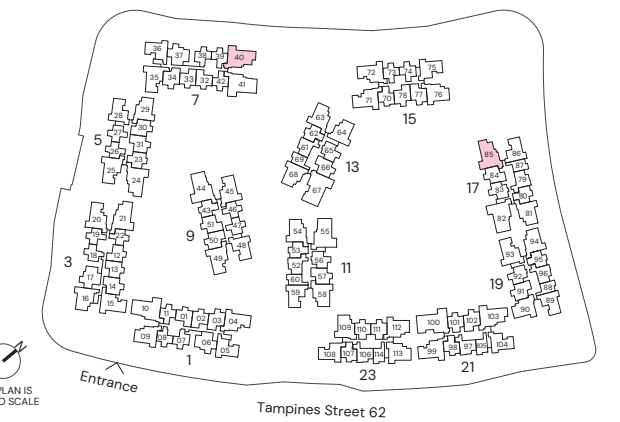
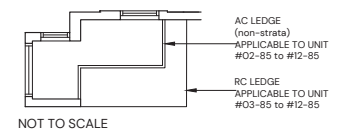
## TYPE D2(p)

124 sqm / 1335 sqft

BLK 17 #02-85



Area includes Private Enclosed Space (PES) or Balcony, where applicable. All AC ledges and RC ledges (non-load bearing) are excluded from strata area. The plans are subjected to change as may be required by relevant authorities. All areas and measurements stated herein as approximate and subject to final survey.





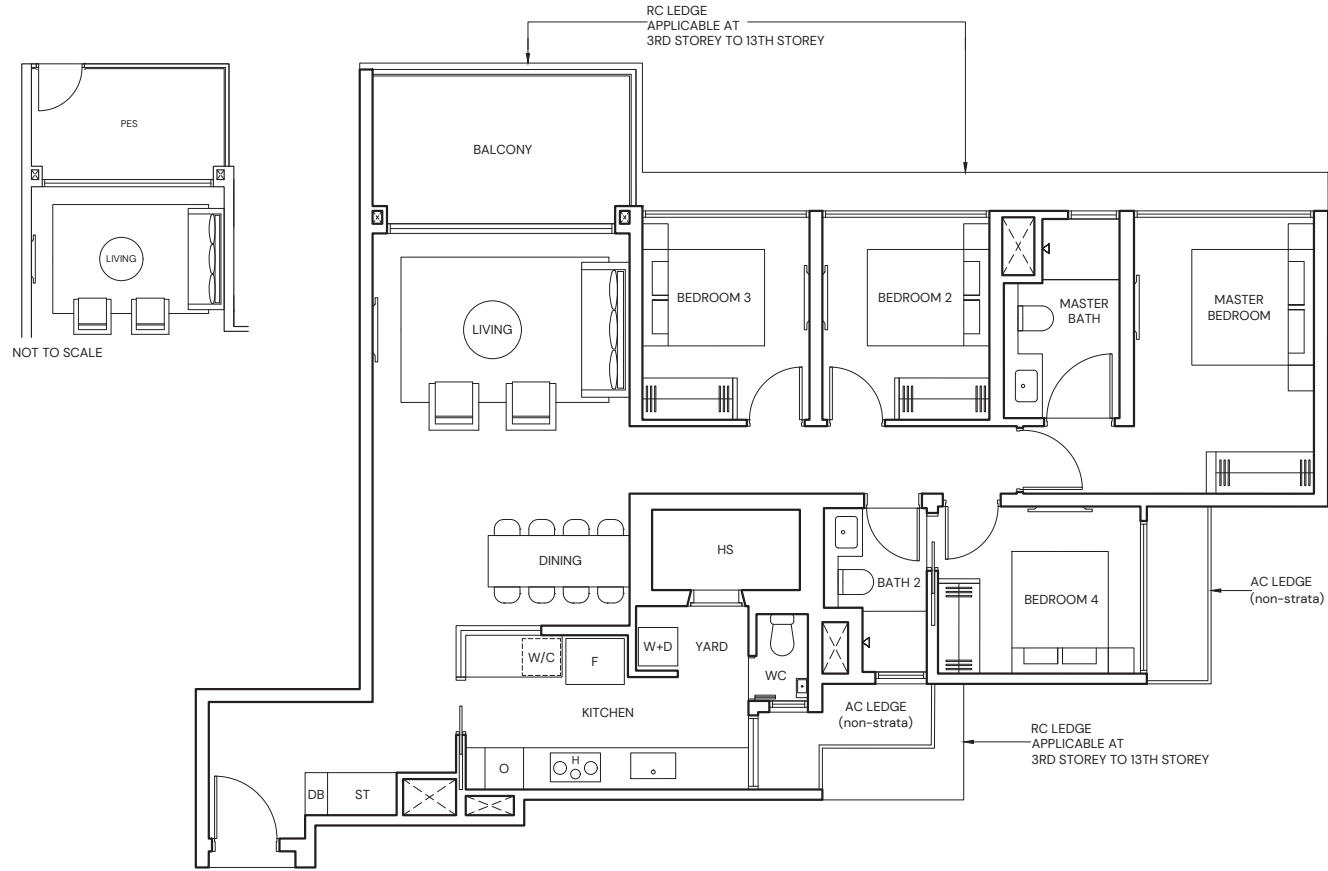
# 4-BEDROOM

**TYPE D3**  
125 sqm / 1345 sqft

BLK 5 #03-24 to #13-24

**TYPE D3(p)**  
125 sqm / 1345 sqft

BLK 5 #02-24



Area includes Private Enclosed Space (PES) or Balcony, where applicable. All AC ledges and RC ledges (non-load bearing) are excluded from strata area. The plans are subjected to change as may be required by relevant authorities. All areas and measurements stated herein as approximate and subject to final survey.

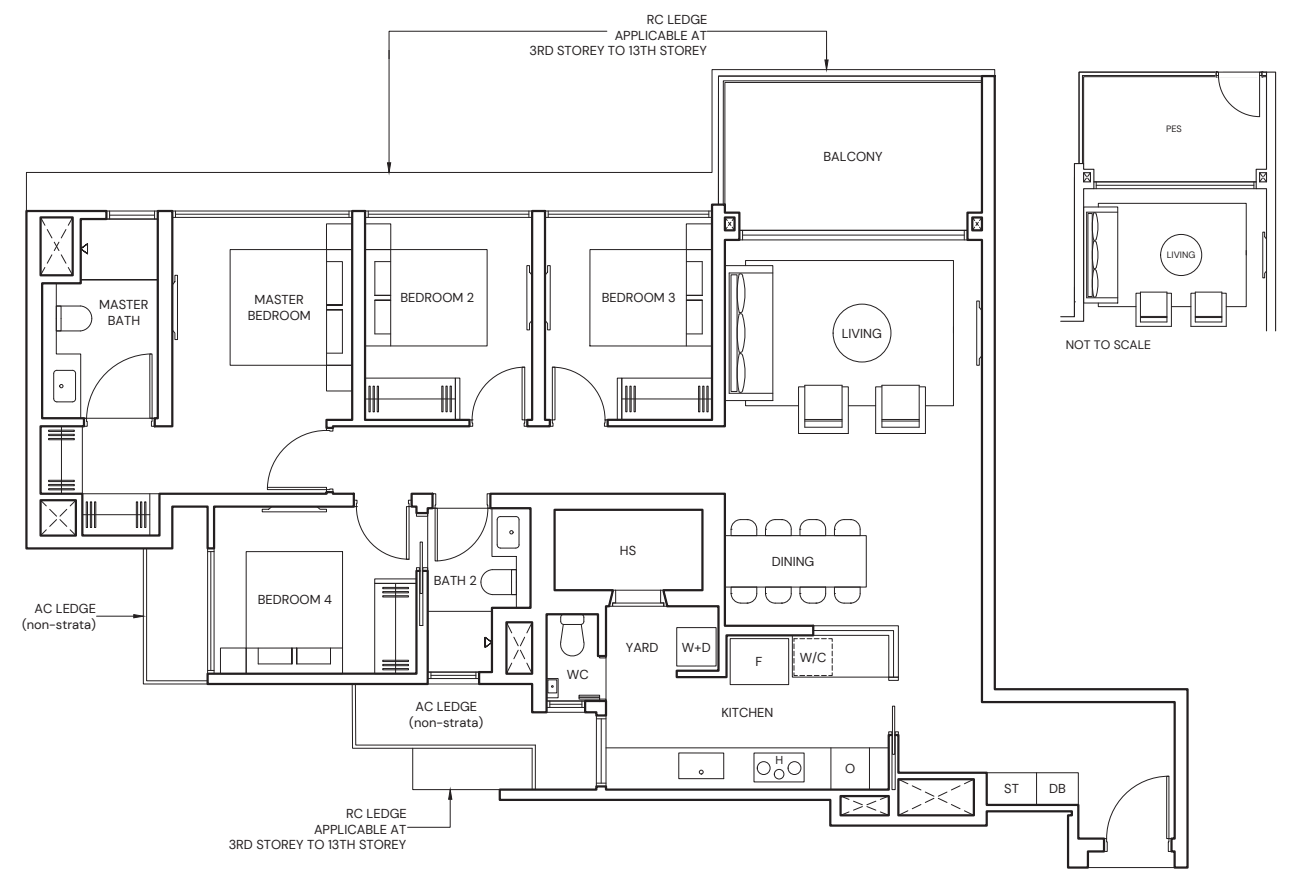
# 4-BEDROOM

**TYPE D4**  
126 sqm / 1356 sqft

BLK 3 #03-21 to #13-21

**TYPE D4(p)**  
126 sqm / 1356 sqft

BLK 3 #02-21



Area includes Private Enclosed Space (PES) or Balcony, where applicable. All AC ledges and RC ledges (non-load bearing) are excluded from strata area. The plans are subjected to change as may be required by relevant authorities. All areas and measurements stated herein as approximate and subject to final survey.



# 4-BEDROOM PREMIUM

## TYPE DP1

138 sqm / 1485 sqft

BLK 11 #03-55 to #08-55  
BLK 17 #03-82 to #12-82

## TYPE DP1(p)

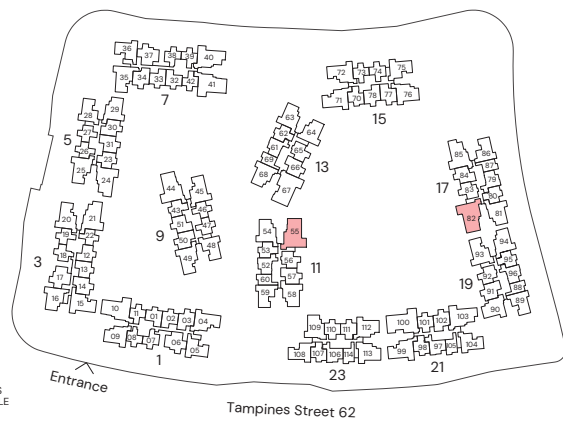
138 sqm / 1485 sqft

BLK 11 #02-55  
BLK 17 #02-82



Area includes Private Enclosed Space (PES) or Balcony, where applicable. All AC ledges and RC ledges (non-load bearing) are excluded from strata area. The plans are subjected to change as may be required by relevant authorities. All areas and measurements stated herein as approximate and subject to final survey.

KEY PLAN IS NOT TO SCALE



# 4-BEDROOM PREMIUM

## TYPE DP2

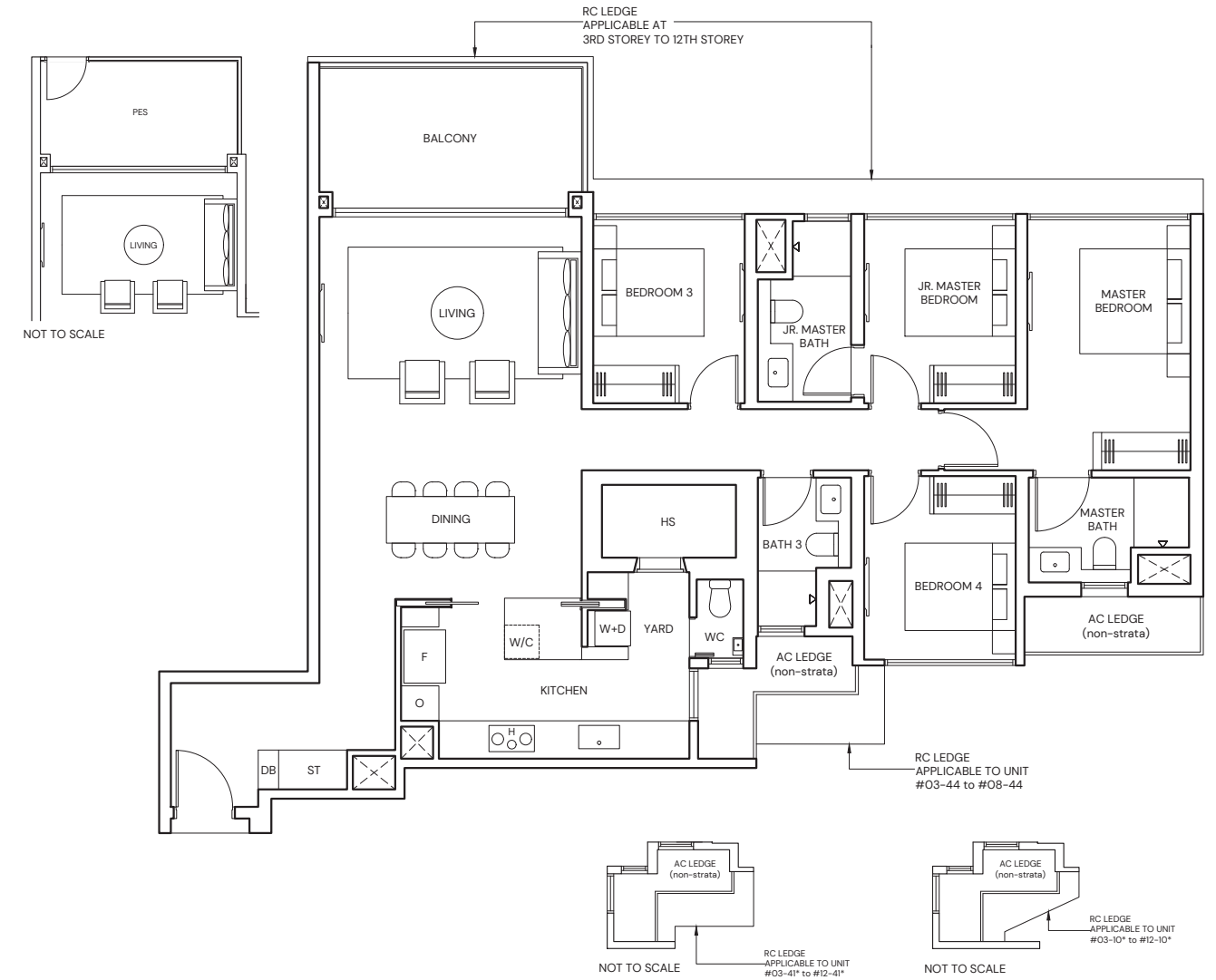
139 sqm / 1496 sqft

BLK 1 #03-10\* to #12-10\*  
BLK 7 #03-41\* to #12-41\*  
BLK 9 #03-44 to #08-44

## TYPE DP2(p)

139 sqm / 1496 sqft

BLK 1 #02-10\*  
BLK 7 #02-41\*  
BLK 9 #02-44

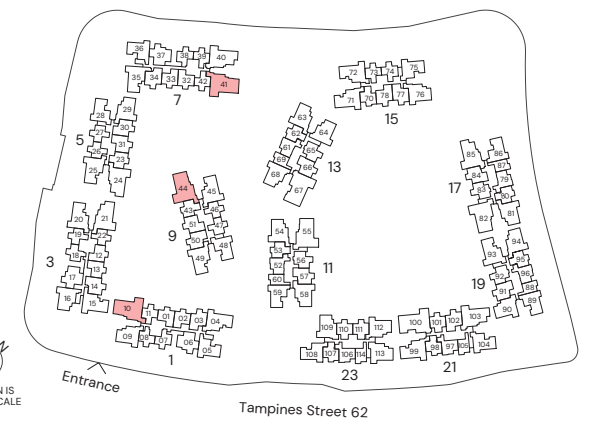


### \* Mirrored Unit



Area includes Private Enclosed Space (PES) or Balcony, where applicable. All AC ledges and RC ledges (non-load bearing) are excluded from strata area. The plans are subjected to change as may be required by relevant authorities. All areas and measurements stated herein as approximate and subject to final survey.

KEY PLAN IS NOT TO SCALE





FOR ILLUSTRATION ONLY

## 5-BEDROOM PREMIUM

### TYPE E1

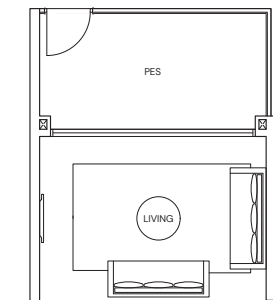
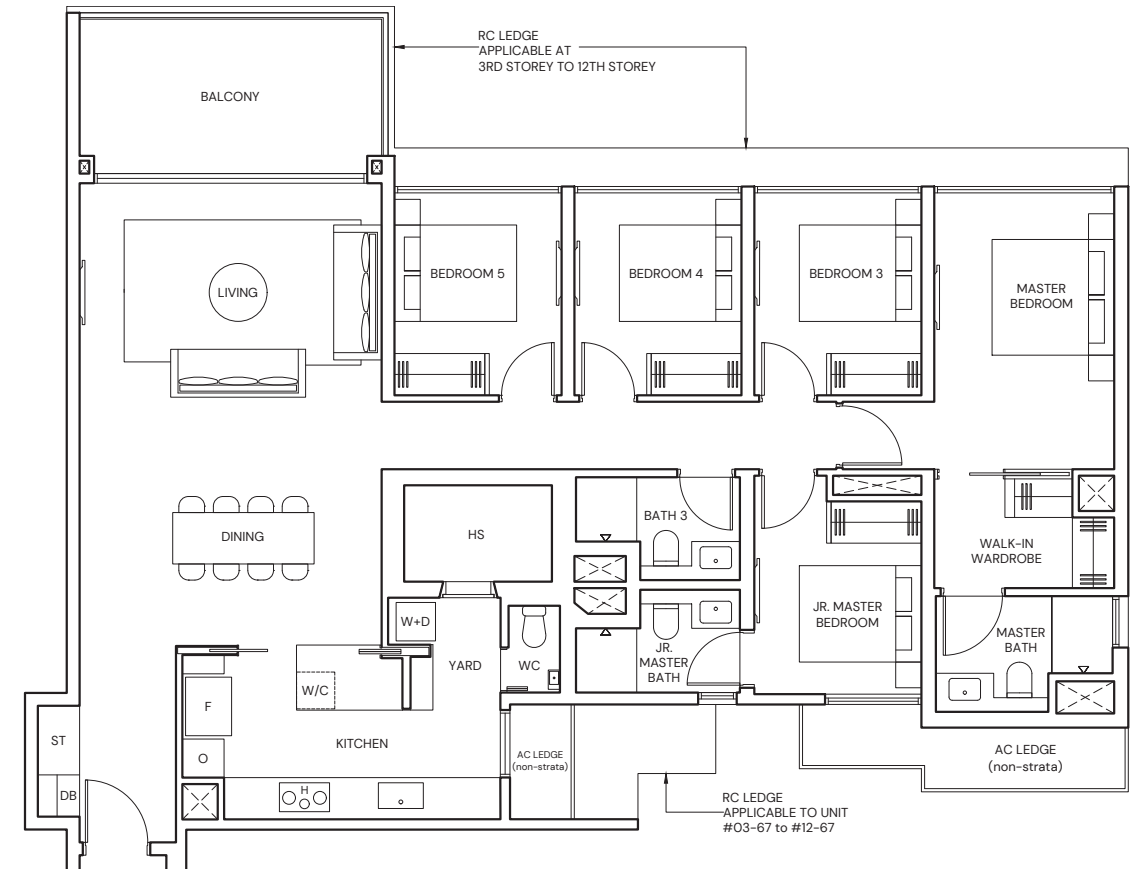
156 sqm / 1679 sqft

BLK 13 #03-67 to #12-67  
BLK 21 #03-100\* to #12-100\*

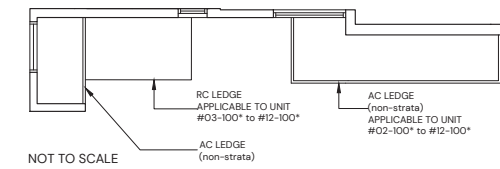
### TYPE E1(p)

156 sqm / 1679 sqft

BLK 13 #02-67  
BLK 21 #02-100\*



NOT TO SCALE

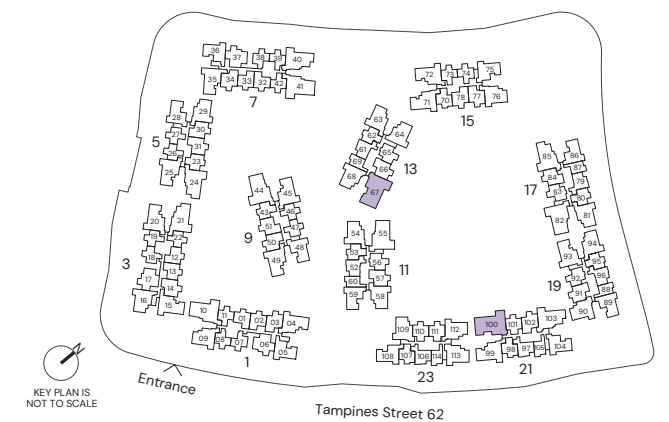


NOT TO SCALE

### \* Mirrored Unit



Area includes Private Enclosed Space (PES) or Balcony, where applicable. All AC ledges and RC ledges (non-load bearing) are excluded from strata area. The plans are subjected to change as may be required by relevant authorities. All areas and measurements stated herein as approximate and subject to final survey.



KEY PLAN IS NOT TO SCALE

Tampines Street 62